

# A Meeting of Appreciation and Tribute to FRANK J. SPRAGUE

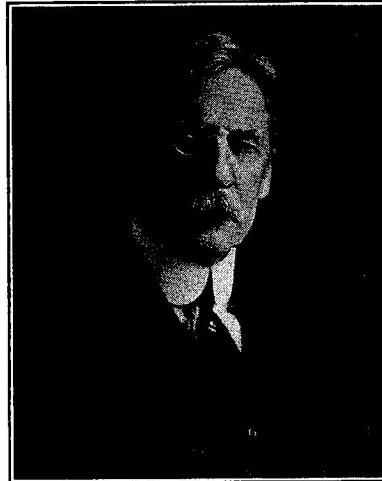
1857 ~ Seventy-five Years ~ 1932

Engineer

MONDAY  
July 25, 1932  
8:00 P.M.

Members  
of  
Societies  
and Friends  
are  
invited

Scientist



Inventor

Pioneer electrical applications ~ electric motors ~ railways ~ elevators

AN ENGINEER'S CONTRIBUTION TO THE WORLD'S WELFARE: *Dr. John H. Finley*

AN ENGINEER'S CONTRIBUTION TO TRANSPORTATION: *Mr. Frank Hedley*

FRANK J. SPRAGUE — A TRIBUTE: *Rear Admiral S. S. Robison, U. S. N. (ret.)*

Response: MR. FRANK J. SPRAGUE

## FRANK J. SPRAGUE ANNIVERSARY COMMITTEE

GANO DUNN, *Chairman*

CARY T. HUTCHINSON, *Secretary*

C. E. SKINNER . . . . .	President, American Institute of Electrical Engineers
C. N. LAUER . . . . .	President, American Society of Mechanical Engineers
H. S. CROCKER . . . . .	President, American Society of Civil Engineers
SCOTT TURNER . . . . .	President, American Institute of Mining Engineers
C. P. PERIN . . . . .	President, American Institute of Consulting Engineers
O. H. CALDWELL . . . . .	President, New York Electrical Society
H. HOBART PORTER . . . . .	President, The Engineering Foundation
H. A. KIDDER . . . . .	President, United Engineering Trustees
G. A. RICHARDSON . . . . .	President, American Electric Railway Association
J. F. OWENS . . . . .	President, National Electric Light Association
G. P. JESSOP . . . . .	President, Naval Academy Graduates Association of N. Y.
J. HOWLAND GARDNER . . . . .	President, Society of Naval Architects and Marine Engineers
CHARLES M. SCHWAB . . . . .	President, American Iron and Steel Institute
NICHOLAS MURRAY BUTLER . . . . .	President, Columbia University
THOS. S. GATES . . . . .	President, University of Pennsylvania
HARVEY N. DAVIS . . . . .	President, Stevens Institute
HOWARD McCLENAHAN . . . . .	Secretary, Franklin Institute
C. G. ABBOTT . . . . .	Secretary, Smithsonian Institution
GEO. LEBOUTILLIER . . . . .	President, New York Railroad Club
THOS. ROBINS . . . . .	Secretary, The Naval Consulting Board

Bion J. Arnold	E. E. Dorting	William J. Hammer	James H. McGraw	E. W. Rice	Elihu Thomson
Merlin H. Aylesworth	Ralph Earle	J. H. Hanna	W. S. Menden	A. W. Robertson	Philip Torchio
G. P. Baldwin	W. L. R. Emmet	Frank Hedley	F. A. Merrick	S. S. Robison	J. H. Van Alstyne
C. A. Benton	Thomas Ewing	Frank B. Jewett	W. S. Murray	F. A. Scheffler	S. M. Vauclain
E. R. Carichoff	John H. Finley	A. E. Kennelly	R. B. Owens	F. H. Shepard	H. H. Vreeland
John J. Carty	Bradley A. Fiske	Myles B. Lambert	W. B. Potter	William S. Sims	Edward Weston
Mortimer E. Cooley	George Gibbs	S. H. Libby	Charles R. Pratt	L. B. Stillwell	W. J. Wilgus
Oscar T. Crosby	L. P. Graner	A. D. Lundy	Charles W. Price	Ambrose Swasey	Owen D. Young
	Howard F. Gurney	C. O. Mailloux	Michael I. Pupin	Gerard Swope	

ENGINEERING SOCIETIES AUDITORIUM, 29 WEST 39th STREET, NEW YORK

Secretary's address — 52 WILLIAM STREET, NEW YORK CITY