



The IEEE

Newsletter

PUBLICATION OF THE NORTH JERSEY SECTION OF THE INSTITUTE OF ELECTRICAL AND ELECTRONICS ENGINEERS

North Jersey-ASSP:

Chairman Needed

The North Jersey Chapter of Acoustic Systems-Signal Processing is in need of a chapter chairman. Anyone who is willing to assume the chair or co-chair of this society please call Mike Liechenstein at (201) 471-0721.

Section Schedules Fall Evening Courses

The IEEE North Jersey Section is again planning some evening courses of interest to members. Scheduled to start in late September the courses are: "C Programming," "C Plus Plus," and "Technical Writing."

Details and registration information will appear in the August and September issues of the Newsletter. Mr. John A. Baka is the coordinator for these courses and may be reached at (201) 455-8534 (Business).

What Is Your Membership Grade?

If your grade is Member, you may be eligible for Senior Member grade.

If you are an Associate Member, you could qualify for Member or Senior Member grade. The dues are the same for all three grades.

To receive information contact Don Weinstein, Kulite Semiconductor, One Willow Tree Rd., Leonia, NJ., 07605-2239, (201) 461-0900, Ext. 3106.



**IEEE VIDEOCONFERENCES
SEMINARS VIA SATELLITE**

North Jersey Section: **2020 Vision: The Future Of Engineering Technology**

The next videoconference in the 1993 series will occur September 30 on "2020 Vision: The Future of Engineering Technology", which will examine both the engineering and re-engineering processes and how to improve them through documentation, study, streamlining and innovation. The lead presenter at this videoconference will be Marv Patterson of Hewlett-Packard Company.

Admission FREE to IEEE Members

Admission for all videoconferences is free to IEEE members; others may attend by completing an application form for membership with payment of 1993 half-year dues—\$51 for regular members, \$14 for students. **Mail check** payable to "IEEE" to Richard G. Estock, c/o EDP Consultants Inc., 77 Meredith Rd., Colonia, NJ 07067-3198. Include your name, address and telephone number on the check.

For information on videoconferences contact Richard G. Estock at (908) 388-5110.

North Jersey Section IEEE: PACE **Starting And Managing Your Own Small Business**

The North Jersey Section of the Professional Activities Committees for Engineers will present a two-session evening program on starting and managing your own small business. See page three for details.

Time: 7:30 PM, Thursday, July 8, and August 12, 1993.

Place: JCP&L Co., 300 Madison Ave., Punch Bowl Room, Morristown, N.J.

Further Information: Robert Sinusas (201) 228-3941.

Publication No: USPS 580-500

The North Jersey Section's "The IEEE Newsletter" is published monthly except June by The Institute of Electrical and Electronics Engineers, Inc. Headquarters: 345 East 47th Street, New York, N.Y. 10017-2394. \$1.00 per member per year (included in annual dues) for each member of the North Jersey Section. Second-class postage paid at New York, N.Y. and at additional mailing offices. Postmaster send address changes to: "The IEEE Newsletter," 445 Hoes Lane, P.O. Box 1331, Piscataway, N.J. 08855-1331. USPS 580-500.

NEWSLETTER STAFF

Editor M.M. Perugini
Business Manager A.M. Beattie

Deadline for receipt of material is the 1st of the month preceding the month of publication. All communications concerning editorial and business matters, including advertising, should be addressed to: The Newsletter, c/o Girard Associates, Inc., 6 Robert Terrace, P.O. Box 455, Mt. Arlington, N.J. 07856 (201) 398-5524.

IEEE North Jersey Bulletin Board System:
0 TO 9600 baud, 8 bits, no parity, 1 stopbit, BBS
phone number: 201 669-8268.
(Courtesy of United Societies of Engineering &
Science of NJ, Inc.)

REPORT ADDRESS CHANGES TO:

IEEE Service Center
445 Hoes Lane, P.O. Box 1331
Piscataway, N.J. 08854-1331
(908) 981-0060

It is not necessary to inform the North Jersey Section when you change your mailing address. The NEWSLETTER and other section mailings use a list provided by IEEE's national headquarters in New York. This means the Section has no need to maintain a mailing list or addressing plates. Section membership records are changed when Headquarters notifies us.

SECTION OFFICERS

Chairman M.I. Liechenstein
471-0721
Vice-Chairman-1 Tom De Nigris
533-9325
Vice-Chairman-2 Sergei Bogaenko
785-3673
Treasurer Al Connelly
616-0755
Secretary Art Greenberg
633-6129
Member-at-Large Al Bottani
Member-at-Large Joe Nelson
Member-At-Large Vittal Rebbapragada
Jr. Past Chairman Richard V. Snyder

The North Jersey Section Executive Committee usually meets the first Wednesday (except holidays and December) of each month at 7 PM. These meetings are open to all members. Information on meeting agenda is available from Art Greenberg, Section Secretary at 633-6129.

Elected Section Officers are listed above.

North Jersey Section Activities
JULY

July 7, 1993—"North Jersey Section Executive Committee Meeting"—7:00 PM, Plant 11, GEC-Marconi, 164 Totowa Rd., Totowa, N.J. Art Greenberg (201) 633-6129.

July 8—"Session One: How To Start And Manage Your Own Small Business"—North Jersey Section PACE, 7:30 PM, JCP&L Co., 300 Madison Ave., Morristown, N.J. Robert Sinusas (201) 228-3941.

Upcoming Meetings

August 4—"North Jersey Section Executive Committee Meeting"—7:00 PM, Plant 11, GEC-Marconi, 164 Totowa Rd., Totowa, N.J. Art Greenberg (201) 633-6129.

Aug. 12—"Session Two: How To Start And Manage Your Own Small Business"—North Jersey Section PACE, 7:30 PM, JCP&L Co., 300 Madison Ave., Morristown, N.J. Robert Sinusas (201) 228-3941.

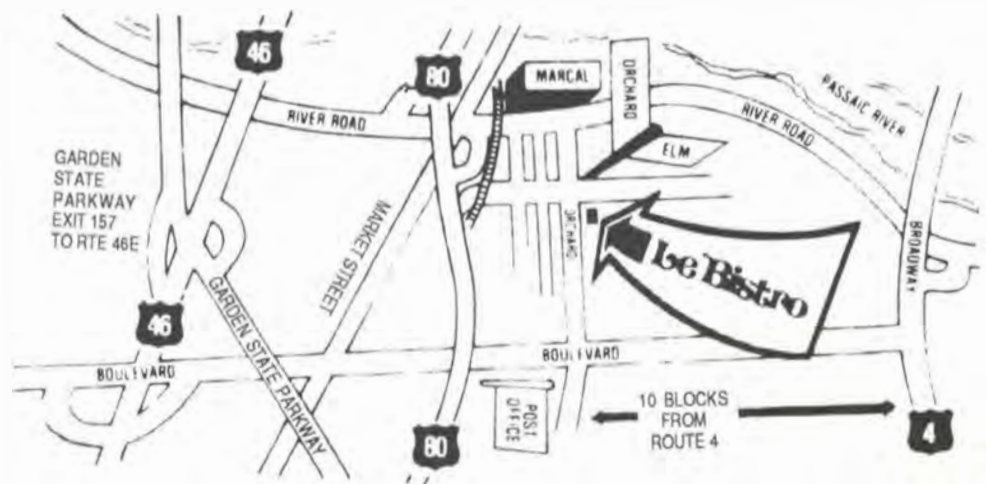
Sept. 30—"2020 Vision: The Future of Engineering Technology"—Videoconference, North Jersey Section. Details in August and September issues. Richard Estock (908) 388-5110.

Members and Non-Members Welcome
PLEASE POST

Engineers' Network Association
Seeks Participants

All experienced engineers who are actively seeking employment or consulting positions of at least \$35,000 per year are invited to join the Engineers' Network Association, a forum for the exchange of job leads. To participate, bring at least one unpublicized job lead that you do not intend to pursue to share with others who might be interested. The Engineers' Network Association meets every Wednesday at 1:30 PM at Le Bistro Restaurant, corner of Elm and Orchard Streets, Elmwood Park, N.J.

If you would like additional information, call Merrill Rutman (Member, IEEE), at (201) 447-6041.



IEEE MEMBERSHIP IS YOUR KEY TO SUCCESS



Join the
club.

IEEE's 37
technical
societies conduct local
activities worldwide.

Members meeting
members
to share the
latest technical
developments.

Discover the
advantages of belong-
ing to the world's
largest professional
technical society—

The Institute of
Electrical and
Electronics
Engineers, Inc.—
over 320,000
members.

FOR MEMBERSHIP
INFORMATION CALL
1-800-678-IEEE

North Jersey Section IEEE Professional Activities Committees for Engineers Seminar How To Start And Manage Your Own Small Business

Jersey Central Power & Light Co.,
300 Madison Avenue, Morristown, N.J.

The North Jersey Section of PACE will present a two-session evening program on starting and managing your own small business.

The seminar will be presented by members of the Clifton branch of SCORE (Service Corps of Retired Executives) Chapter 24. Presenters will include William Fockler, Branch Administrator, Henry Egen, Aaron Frank and Robert Young.

Session One

Thursday July 8, 1993, 7:30 PM

1. WHY START A BUSINESS?

- What is SCORE? What is its relationship with SBA (US Small Business Administration)?
- The 4M's-Motivation, Marketing, Management and Money
- Why do businesses fail?
- Buying an existing business
- Franchises
- Location

2. LEGAL STRUCTURE

- Sole Proprietor
- Partnership
- Corporation (1) S Corporation.
- Registration of the business County, State, Federal

3. MARKETING AND ADVERTISING

- Research market for product
- Know your competitors and products
- Methods of advertising

Session Two

Thursday, August 12, 1993, 7:30 PM

4. FINANCES

- Record Keeping
- Accounting
- Bank Accounts
- Taxes
- Insurance

5. BUSINESS PLAN

- Why is it needed?
- Detailed Review of Outline

6. FINANCING THE BUSINESS

- Banks and SBA
- Friends and Relatives
- Stock
- Home equity
- Venture Capital

All IEEE members and guests are invited to attend.

Time: 7:30 PM, Thursday, July 8, and August 12, 1993.

Place: JCP&L Co., 300 Madison Ave., Punch Bowl Room, Morristown, N.J.

Further Information: Robert Sinusas (201) 228-3941.

Professional Activities Committees for Engineers NEWS

By Richard F. Tax

Unbelievable 47% of Engineers Age 59 And Over Were Eliminated From Employment Between 1990 And 1992

An analysis of age distribution of U.S. engineering employees indicates a substantial loss of employment for engineers age 59 and over during the past year. This conclusion was obtained from research conducted by the IEEE-USA Manpower Committee using data from the Engineering Manpower Commission (EMC).

The closest estimate of U.S. engineering population is 1,864,000. Extrapolating the percentage loss in the survey sample from Bureau of Labor Statistics (BLS) Current Population Survey (CPS), the job loss amounts to 70,600 during the last year for the above age group. The total survey response counts were about 23,000: 11,000 for the 1991 statistics and 12,000 for the 1990 statistics shown in the figure. Here's how these results were computed.

The figure shows what percent of employed engineers occupy each bracket of years from graduation. The median graduation age is 23. The figure contains two curves: one for data taken in 1990; the other for data taken in 1991. In order to compare the two populations, the 1990 distribution from year zero is compared with the 1991 population from year one, because the individuals were one year older in 1991. Note the similarity between the two curves up to 36 years from graduation (age 59), where the 1991 curve abruptly drops below the curve for 1990.

The total population of employed engineers 36 years from graduation is obtained by integrating the area under each curve starting at 36 years and continuing to 51 years from graduation (or wherever there is no area left under the curve). Integrating this area for the

1990 curve yields a figure of 8.06% of employed engineers age 59 and over. Integrating this area for the 1991 curve yields a figure of 4.27% of employed engineers age 59 and over. The difference is 3.79%. 1,864,000 engineers times 3.79% equals 70,600 jobs lost for engineers over age 59. Dividing the 3.79% job loss by the 8.06% jobs before the loss gives the 47% figure in the title of this article.

Do the BLS-CPS employment numbers tend to substantiate the magnitude of displacement? The four-quarter average of engineering employment in the third quarter of 1990 was 1,864,000, while the four-quarter average in the third quarter of 1991 was also 1,864,000, representing no employment growth in the 90-91 period. The employment system, however, is normally in a growth mode. The mid eighties showed an average growth of 46,000 jobs per year. The lack of growth could account for over half of the indicated displacement (of 70,600). Regardless of the reason for the job loss, should we expect to find the bulk of the loss at age 59 and over? Not unless some form of age selectivity took place.

Robert A. Rivers, Box 129, Union, NH 03887

This article is reprinted from the February, 1992 issue of the "American Engineer" newsletter, the publication of the American Engineering Association. For information about the AEA write to AEA, P.O. Box 820473, Fort Worth, TX 76182-0473 or call (817) 431-1319. Information may also be obtained by calling Richard Tax at (201) 664-0803.

