

VOLUME 3
NUMBER 2
MARCH/APRIL 1978



interCOM

COMPOSED, EDITED, AND PRINTED BY AND FOR THE EMPLOYEES OF IEEE

DR. EMBERSON GENERAL MANAGER OF IEEE

In the January-February issue of Intercom the announcement was published that Dr. Richard M. Emberson was officially made General Manager of IEEE. This is the first opportunity we have had to comment on that development.

First of all, and I know I speak for the Intercom staff, we congratulate him and wish to assure him that, as representatives of the various departments in IEEE, we are pleased to learn that a truly worthy person has made it to the top.

Not surprisingly, we are confident that his positive attitude projected in issues of Intercom is genuine, and will go far in fostering an "esprit des corps" among IEEE employees. His reference to IEEE as "our organization" reminds us that we all have a stake in its future. His "pride" is our pride because it tells us indirectly that we have contributed to the Institute's progress and success.

The "style" of the top executive of an organization sets the style for the entire staff, and before long we will feel that "style" permeating the fabric of IEEE staff. To describe that style in words would be to recognize it in Dr. Emberson. These are the characteristic traits of: positive approaches to problems, sincerity, pride in accomplishment, warmth of character, progressive thinking, hope, openness, and a willingness to listen. . .to paraphrase further from his memo of March 6, 1978 to the entire staff, "If you have ideas for improved procedures, expanded programs, clearer and simpler communications, or for any other phase of our operations, speak out—I will gladly listen." No false hopes are raised in that statement. We are only encouraged to think and to speak, and we are assured that we will be heard.

IS THAT A BOUNDBROOK TROUT?

At the February meeting of the IEEE Board, Director Brereton presented a genuine IEEE bowtie to the General Manager. Also shown in the photograph are: President Getting, Executive Vice President Hogan, Junior Past President Saunders, and Senior Past President Dillard.



Director Brereton explained that the bowtie had been custom-made and represented a joint effort by many members of the Headquarters Staff.

Quoted the General Manager "I am deeply moved by this gift and wish to thank everyone involved." He then demonstrated how to tie a bowtie properly without a mirror.

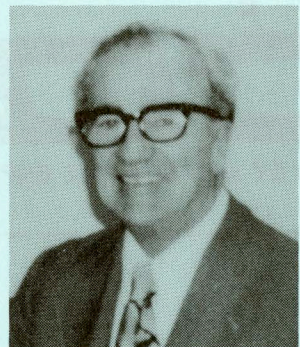
Notes

The Intercom Staff welcomes new members: Dolores Riker, Corporate Services; Mamie Bolding, Standards; Geri Potter, Education; Cathy Uffer, Subscriptions; Carolyn Yanoski and Dianne Suydam, Shipping; Peg Riker, Accounting; and Diane Rhodes, Publications.

Thanks to outgoing staff members: Veronica Lewis, Mary Bode, and Stephanie Wolfson. We will miss your contributions and cooperation.

R.I.P.

Ernest Weitz, husband of Frances (Dee) Weitz, passed on after a long illness. Her friends and co-workers offer condolences to "Dee" in her time of sorrow.



Frank's first job was as a commercial artist. In addition to layouts, drawings, sketching, ruling forms, etc., he learned the various methods of printing and all the steps in between—typesetting, stripping negatives, color separation, running a press, folding machine operation—for both offset and engraving.

He paid his own way through Pratt Institute, attending in the evenings and working during the day. Frank majored in advertising design.

His army career of five years saw him rise from Private to Captain. Two years were spent in the jungles of Panama. Primary function - Adjutant.

First position out of the service was Advertising Manager for a large NYC food distributor. Then two years as Assistant Promotion manager of *The Washington Post*; Copy Chief of an advertising agency; and four years as Public Relations Director of the National Association of Ice Industries, Washington, DC. Although he was becoming a writer and marketing manager, his basic knowledge of art was a big advantage in dealing with artists.

Publicity and advertising efforts for the Ice Industries (introduction of ice chests, vending machines, placing articles and publicity in various magazines) attracted the attention of *The Wall Street Journal*.

With three people as a nucleus, he started a new promotion department for *WSJ* in 1953. According to Frank: "Exciting days, for promotion of *The Wall Street Journal* was indeed a challenge." Circulation: 200,000; advertising: \$7,000,000. In the next 16 years, Frank's department grew to 23 employees, including art, copy, and research people. And Frank Timmons was writing many of the ads, brochures, billboards, and radio commercials.

Meanwhile, he held various offices both regionally and nationally in the International Newspaper Promotion Association (INPA). He was the prime mover in the eventual growth to international activity. In 1968, at the international convention in Rochester, Francis X. Timmons was the recipient of "The Silver Shovel" award, the highest honor a newspaper promotion man can receive; it is presented for extraordinary effort on behalf of newspapers.

When he resigned, he was Promotion Director of all Dow Jones publications. The *Journal's* circulation was over

1,000,000 and ad revenue topped \$65 million.

Frank decided to strike out for himself and became Partner and Vice President of a newly formed "promotion agency" in New York City. The firm, EGR Inc., became the largest agency in the country devoted solely to marketing promotion.

After four years, Frank (on his own) moved to New Jersey. One of his accounts was *IEEE Spectrum*. Others were Johns-Manville, Union Carbide, Dow Jones News Service, *The Wall Street Journal* (circulation promotion letters), Merck & Co., Transportation Displays, Inc. (TDI posters), naming just a few.

The last time Frank was in school was to attend a refresher course in marketing at Harvard University.

Asked about his proudest achievements, Frank mentions four: 1) His marriage. 2) The "Silver Shovel" award. 3) Organization and construction of the Fairmount Country Club in his hometown, Chatham, NJ. 4) Early in 1977, after having been out of newspaper promotion for nine years, Frank Timmons received the Headliners Award as one who contributed most to newspaper promotion in the Eastern States in the "last 25 years." Presentation by INPA was made at Great Gorge, NJ with his family present. And that one, says our Marketing Director, "really touched this Irish heart."

Frank Timmons likes his work, and feels much more can be done. The department is small, but has the outside resources to do just about anything in the field of marketing—planning, design, copy, research, the whole bit!

His latest venture is into public relations for IEEE, but that we shall wait and see, says FXT.

THE IEEE MARKETING DEPARTMENT

Frank Timmons has rejuvenated an interest in marketing IEEE publications, *Spectrum*, and all member services. Goal: to upgrade the graphics without overshooting various budgets. Frank says, "Good artwork and good taste don't necessarily mean high price."

Marketing is doing a lot of testing before going to big mailings. The promotion of the *Standards Dictionary of Electrical and Electronics Terms* is a good example of testing. Sales are soaring. Marketing is testing member use of credit cards. Educational courses have prospered as the result of pre-testing. Special *Spectrum* issues promoted by Marketing were successful. "We are positioning *Spectrum* in a special way in the EE market as the magazine for the "eclectic" engineer in a new series of ads this year." Marketing is responsible for dues billing, all letters, pamphlets, and scheduling of all phases of this important revenue-producer for IEEE.

Dud Broderick is Marketing Manager and a perfect complement to Frank Timmons' creative side, for in addition to Dud's writing ability, he is an expert at direct marketing planning and follow-through. Pat Wojnas is Frank's assistant, and Karen Genco is Broderick's right hand.

DEUS EX MACHINE

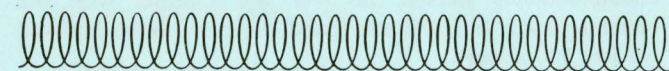
The Publications Department and *Spectrum* now have the convenience of an in-house composition system in the form of a Compugraphic Editwriter 7500. This represents a major production change for both departments where formerly all typesetting was purchased from outside suppliers. The decision to go "in-house" was primarily a financial one. Theoretically, it seemed that we could do our own typesetting more economically. Fortunately, in practice this has proven to be true since both systems are operating in the black.

Composition begins by operating what seems to be a standard typewriter keyboard that is supplemented with 48 additional instruction keys. During this phase, codes are inserted for typeface, size, margin width, etc. All this appears on a display terminal and is stored simultaneously in a minicomputer with a 6000-character memory. Corrections can be made at this time if necessary. A command is then given to either store the output on what is known as a "floppy disk," a magnetic recording disk, which looks like a 45 r/min record, or immediately typeset. The type is produced by a photographic process. A film cassette, which is housed in the main unit, is removed to a developing unit for the final output. At this stage, the type is usually in a single column format called a "galley." This is trimmed to size and pasted down by a layout artist to make a final page.

An interesting feature of the system is its hyphenation capacity. There are 18 basic rules stored in the minicomputer that will automatically break words correctly at the end of a line—most of the time. Nevertheless, our language is a complicated one, and the operator has the option to do this function manually.

Part of the January issue and, since February, the complete issue of *IEEE Spectrum* has been composed on the new system, as well as *The Institute*, *Intercom*, the Student, and Group/Society Newsletters have also been produced. Parts of *IEEE Transactions on Power Apparatus and Systems* are being done on the Compugraphic. This includes some in-text and displayed mathematics. Our telephone directory has been composed and stored on a floppy disk. This will eliminate retyping the next edition since the material can be electronically recalled and corrected literally by pushing some buttons. Even the typeface, size, measure, or spacing can be changed by simply changing the command codes for these items.

Further applications of this system abound. At present, the in-house demand exceeds the capacity. It may even be necessary to acquire a third unit in the future.



PROFILE: MARIANNA LOGIUDICE



Marianna LoGiudice is the human element who operates the "electronic brain" of the Publishing Services Department's Compugraphic Editwriter 7500. She began work last November when the new system was installed. She is no stranger to in-house composition. Before coming to IEEE she operated an IBM composer at Industrial Acoustics Company. This company made sound proofing materials for industry. She relates that her former company once sound proofed a factory in Queens which crushed diamonds to make rather expensive dust.

Marianna went to Berkeley Business School and received an Associate Degree. She enjoys the business world so she decided to go right to work. At present she is attending Lehman College at night and working toward a B.A. in graphic arts. In her spare time, of which she has very little, she enjoys being outdoors, especially bicycling and playing tennis. This she shares with her fiancé who is very sports minded.

Mastering the composition system has been a rewarding challenge for Marianna. She learned on the premises with the aid of a Tutor Packet. This consisted of an instruction book and some cassette tapes. In this way you learn the basics; however, some IEEE work demands far more than that. In some areas she has been able to extend the limits of the system beyond its actual design capacity. Her ability to typeset some mathematical equations is a good example of this. Her experience and ingenuity will extend these limits even further.

She does attribute an anthropomorphic quality to the system: "the machine has a personality." There are some days when the machine will act up and not respond to commands. These days are rare, but on some occasions it will refuse to cooperate. She is prepared for this nonetheless with a suitcase filled with printed circuit ("ram") boards and a tool kit.

No doubt in the future Marianna will find the time to prepare a paper on man-machine systems for *IEEE Transactions on Systems, Man, and Cybernetics* that she will probably typeset herself.

PUBLISHING SERVICES DEPARTMENT

The Publishing Services Department welcomes new Editorial Assistants: Michael Coffey, Steven Fox, Susan Froetschel, Nancy Palmquist, and Kenneth Wolpin. We also welcome Nela Rybowicz, Assistant Editor, back to our staff. The cordial greeting you receive when you enter the 11th floor is from Debra Connolly, our new Receptionist. Eleanor "Schloss" Maul will be leaving us in April; she'll be retiring after over 40 years of service. Stephanie Bludau, Supervisor, Publication Production, will be taking her place. Layout Artists Susan Barrett and Diane Rhodes have joined us, as well as Marianna LoGiudice who is doing our composition on the new Compugraphics Editwriter 7500. Beverly Sutton has returned to the Reprint Department. Karen Genco recently left that area and transferred to the Marketing Department. The Information Services Department welcomes two new people: Irene Perry, Coordinator/Cataloger, and Rita Elefania, Production Assistant. Erika Beqaj has just been promoted to Administrator, Copyrights and Permissions. She will be assisted by Ellen Joyce. Esther Kelmenson will transfer to our Department and become the Administrative Assistant to Pat Penick. Stephanie Wolfson left on St. Patrick's Day to await the arrival of her first child. Ceil Toffel had a baby girl on November 14. She's already training Erin Beth to help her edit some of our Transactions. Congratulations to Paul Schlein on his recent marriage to Mona Mor-sand, a former IEEE employee.

Our sincere condolences are extended to Woody Gannett on the loss of his father.

SHIPPING INNOVATION

The Shipping Department is moving along steadily with up-to-date modern equipment to quickly and efficiently get all filled orders out the door in almost half the time it used to take. We now have computerized postage, the "Parcelmatic II."

This advanced computer provides U.P.S. postage, fourth class, first class, third class, and parcel post rates. It stamps the date, weight, and price on the order form or invoice and also gives each U.P.S. package an identification number which can be traced in the event a package is lost.

This computerized machine counts the number of packages shipped each day, providing totals for U.P.S. and regular postage. Frank Velardi is in charge of the postage computer and has taught each member of the Shipping Department how to effectively check postage rates.

S. Tennenbaum

NEWS NOTES

The news of Laura Kohler, former SSU Supervisor, giving birth to baby boy, David, on January 29th has heightened

the anticipation of Janet White, of Member Services, and her husband Ed, who are awaiting the arrival of a playmate for their son, Eddy, due this July. Jane Purkiss, SSU Memory Typist, is the envy of every working wife because she will be leaving at the end of March to resume her job as housewife. Carol Lund of Member Services was pleasantly reminded by her husband Tom of how much their marriage means to him. Tom sent her a beautiful bouquet of red roses in honor of their eighth wedding anniversary. New faces in different places are always a delight, and Subscription Service Unit Cash Processor, Kim Sullivan, has transferred to the Payroll Department. We wish Kim good luck in her new position, and we welcome Cindy Zingg who is replacing her. In an attempt to form its own professional basketball team, the Systems Department welcomes Ed Jackson. Ed weighs in at 230 pounds and is 6 ft. 6 in. tall. Key processing, which serves as the official cheering squad, is proud to add to the squad Linda Barankovich and Ruby Patillo. There are no road games scheduled yet, but when the schedule is made, I'm sure it won't be as exciting as the travel news from the Shipping Department. Carol Yankowski is off to Marywood College, Scranton, PA, March 29 and 30 for a seminar on church music. Later in April she is going to Bermuda as chaperone for the Competition Chorus Festival. Her two sons are members of the South Plainfield High School Traveling Chorus. March 23, Shelly Tennenbaum, Manager of Shipping, leaves for a trip to Israel. She returns April 2 and takes off again on April 30 for Guadalupe. June 30 thru July 4 she leaves again for Niagara Falls, Canada. Beginning April 11, Ethel Gernandt of Shipping will be vacationing in Florida, where she hopes to visit Disney World, Sea World, and all of the other exciting places one associates with Florida. The Shipping Department certainly plans to keep the airlines busy.

What are your plans for the future??? Is there something special you'd like to share with us? Give any news of interest to the Intercom reporter in your department.

Compiled by Verna Miller

FORTY YEARS PLUS

Eleanor Schlosser Maul joined the AIEE on June 15, 1937. Her starting salary is listed as \$30 a week. She finally tired of that pittance, and the other day she quit.

Well, that's not quite what's happening. What's happening is that Schloss' husband, George, retired, and Schloss, not one to take that kind of stuff, decided to engage in a little oneupsmanship herself. So she got together with the benefits people at IEEE and found she could retire and still get her \$30 a week!

Schloss has given her best to the Society; she has always been a conscientious, hard-working person. We will miss her pleasant personality and wish her the best of everything. And George, too.

Jim Carter Publications Dept.

During a recent Voice of America radio broadcast, Kaarin Kolbre was interviewed about IEEE publications. The news program, which is international in scope, is divided into three areas. The first is the current news of the day. There are two other features, one devoted to cultural events, and the other to scientific and technical areas. The interview was conducted in the Estonian language and broadcast to that part of the world. The news show was one half hour long (without commercials!) and seven minutes were devoted to the IEEE. Kaarin described our publication activities and her work in the information sciences area. She also mentioned that the Proceedings of the IEEE is available in a Russian translation. They were particularly interested in the fact that a Bulgarian delegation of information scientists was received at the IEEE by Dr. Emberson. The visiting scientists expressed a desire to receive the Proceedings in English



rather than Russian. Since many of them knew English, they could read the scientific information before the translation was available. Kaarin also noted that we have some Estonian authors; she is in a position to know since all that IEEE publishes is indexed in her department.

A BIT OF GREEN * * * * *

As we await the coming of Spring and the flower-filled days of Summer, our thoughts center on things green: lawn conditioning, the health of our shrubbery, the excitement of planning interesting flowerbeds and luscious vegetable gardens.

Gardening can be fun! Mother Nature sets a few basic rules, that if used, can bring renewed joy. Knowing what to do and timing are the keys to fulfillment.

In Spring, we concentrate on our lawns first because this is usually the largest garden investment. If you are one of those, now is the time to apply your preferred weed killer and repair those bare spots.

Be selective in seed buying. Avoid bargain packages that contain large amounts of temporary grass. Consider bluegrass for the sunny areas and plant red fescue in the shady areas.

Your next project might be the flowerbeds. Working rich compost or manure into the soil will encourage active growth of your perennials.

Flowerbeds tend to "heave" in winter thawing, forcing the perennials to rise up out of the ground. A simple remedy is to step around the plants and firmly tamp them down. Shape up your garden tools now.

Possibly many of you forgot to start your tubers due to February snowfalls. You can catch up by starting them in flats of peatmoss which can be set outdoors after all danger of frost has passed. Vegetable seedlings are best started indoors some time in late February. Roses and shrubbery

should be ordered for early planting; however, it is not too late to start now. Fertilizing is important. It adds food to your soil. Be careful, read labels, and buy the best type for your flowerbeds and gardens.

Assembled are some facts, which will guide you in your selections.

Organic fertilizing is safest to use and there is less chance of "burning" your lawn. Organic fertilizers are as follows:

- Sheep Rabbit Manure — Although higher in nutrients, it cannot be readily used by plants. It lacks the bulky material needed to loosen the soil.
- Chicken Manure — Rich in nitrogen. Use sparingly and never alone. Mix with garden trimmings so nitrogen can transform them into soil builders.
- Cow Manure — A "must" for rose gardens. It is high in nitrates when fresh, but adds little to soil when dry.
- Horse Manure — Has a very high ammonium content and is apt to burn. Burning can be reduced by mixing with garden and lawn trimmings.
- Bone Meal — Coarse meal releases phosphorous slowly. It has a small amount of nitrogen, but is high in phosphorous. It can be expensive.

Green Manure — Most economical and best way to improve your soil. All you need to do is turn your unwanted plants over into the ground.

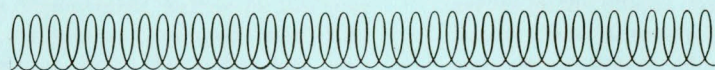
This check list will reduce your reading time so you can get started with your Spring chores. The major items you should attend to *now* are:

- Prune dead branches from your trees and shrubbery.
- Start preparing your garden beds and vegetable areas.
- Clean up your grassy areas, apply weed killer and fertilizers, and repair those bare spots.
- Start planting your new shrubbery, young trees, new roses, grapevines, and strawberry beds. Tamp ground around rose bushes and add fertilizer. If growth has started, you can start your spring spraying.
- Remove your winter mulch.

- Start sowing your hardy vegetables such as peas, beets, carrots, spinach, Swiss chard, radishes, lettuce, and your hardy annuals.
- Divide and transplant your early perennials. Be careful not to injure early shoots that have emerged first.
- Feed your bulb beds, rock gardens, trees, and shrubbery.
- Prepare your garden plot for the warm months ahead.
- Start your indoor flats for those delicious vegetables you will be harvesting in mid-Summer.

Home gardening is a living, dynamic, soul-satisfying hobby. It should be tried by all to bring about a sense of order and beauty. It is in the garden that one feels close to divine achievement. The urge to create is stronger in some than in others, but the fastidious gardener feels a sense of accomplishment and pride as a bare, unnoticed plot is worked into a thing of beauty.

Greensleeves



PISCES February 21 - March 20

- 21 Janis Levine
- 28 Peggy Kovacs
- 29 Lori Churgin
- 3 Jane Post
- 9 Nancy Palmquist

- 6 Bill Saunders
- 8 Mamie Bolding
- 11 Ellen Joyce
- 12 Betty Stillman
- 16 Beverly Sutton

ARIES March 21 - April 20

- 21 Gerry Potter
- 25 Diane Quinn
- 30 Steve Fox
- 1 Diana Casalino
- 1 Eleanor Maul
- 1 Dotty Spano
- 2 Richard M. Emberson
- 2 Vera Sartain
- 5 Ronald Ranger

TAURUS April 21 - May 21

- 23 Arthur Spatarella
- 24 Richard Schulz
- 27 Loreen Finley
- 30 Emma White
- 1 Peter Coccorese
- 2 Susan Froetschel
- 10 Paul Schlein
- 11 Joseph Fragola
- 12 Joanne Biley
- 16 Alba Santos
- 19 Cathy Uffer
- 21 Kathleen Lavin

PISCES

Pisces' features consist of soft skin, light, fine, wavy hair; you will also find a good amount of brunettes. Their eyes are liquid, heavy lidded, and full of strange lights.

The fish was born with the desire to see the world through rose-colored spectacles. He knows well enough about the seamy side of humanity, but he prefers to live in his own watery, gentle world where everyone is beautiful and all actions are lovely. If reality becomes too terrible to face, he will escape into a rosy daydream.

When Pisces has a feeling that something will happen, it usually does. If he tells you not to get on that plane or in that car, you'd better plan to walk or swim.

Few can follow Pisces and probe this aquarian native, whether he swims downstream to oblivion, or upstream to conquer the swift current. He is stronger than he thinks and wiser than he knows, but Neptune guards his secrets until he discovers it for himself.

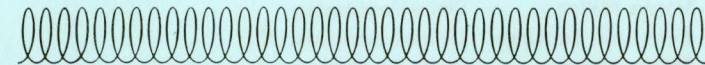
ARIES

Aries people have decided features, usually sharp but seldom soft or blurred. The well-marked brows often join with the narrow bridge of the nose. You may notice a mole or a scar on the head or face, a reddish cast to the hair in sunlight, and more color than the average complexion.

Aries are very energetic, but they are also capable of being calm, wise, and serious if they choose.

Most Aries people are usually happier in business or the creative arts, where they are needed. Others may excel in planning strategy. You may find an occasional Aries who is shy, but you'll never find one who's uncertain where he stands.

Aries is a pioneer, always leading others onward to an impossible goal. Help yourself to his money, clothes, or time. He always has some to spare. He loves to make people happy. To an Aries, miracles are a dime a dozen; if you run out he'll make some more.



PISCATAWAY BOWLING NEWS

Here's how the IEEE bowling teams line up as of March 15, 1978: team no. 3, 8, 1, 5, 2, 6, 4, 10, and 7. There is a span of 40 points between the first and last place team, and 7 points may be won, lost, or split each week.

THE PROPHET SPEAKETH

Right to the end of the season there will be a knock-down-drag-out battle for second place. Team No. 3, the "Wood Bees" with Joyce Farrell, Wanda Zaremba, and Jack Williams, is unwilling to release its hold on first place. They have the skill and persistence (and a touch of luck) to make it all the way. With ten weeks left of bowling, it will take a major breakthrough to dislodge them. While team 8, "Three Man Theme," often does well, they do have bad days. Team 8 has a team average of three points over the "Wood Bees"; if they aren't contenders for first place, no team is. The "Sky Divers" and the "Alley Cats" will have to make their move *now* to get a shot at first place; while they are good enough to do it, they will need more determination to turn the trick.

Sudden changes in team players could upset the trend as has happened before. Teams with new hot possibilities who can make the difference are the "Alley Cats" with the help of Mark Malyar added. "Three Man Theme" can take it all if Marilyn Moody can bowl steadily. Madelyn Kinney can help

TAURUS

Taurus' features consist of a well-proportioned body, whether they are short or tall. Their ears are usually small and close to their heads. You may notice a lock of hair (resembling the bull's forelock) or a curl that hangs in the center of the forehead. Not all, but many Taureans have curly or wavy hair. They usually have dark eyes and skin.

Taurus people are home folks. There's scarcely a bull who doesn't live to luxuriate under his roof, who is stretched out to be comfortable. If the Taurus you know doesn't own his own home, he is dreaming about it and will someday.

The bull's fixed nature needs no flaming torches to light the way to the security he seeks. Eventually success will come to him and he will be ready. His home is his castle--and let no man disturb the peace of the bull. Taurus is as patient as time itself, as deep as the forest with a dependable strength that can move mountains. But he is as stubborn as he is strong.

Mary Ann Battagliotti

the "Rock & Rollers" to achieve third place, and Daniel Nolty can help "Nice & Easy" to win more. John Wong's dropping out of the "Rough Riders" can put a crimp in their ambitions for the top three shots.

At this time I see in my "foggy" crystal ball that the season will end in the following way.

| | |
|-------------------|--|
| PREDICTION | Team No. 3 The Wood Bees--Stinging champs |
| | 8 Three Man Theme--Hit a sour note |
| | 2 Sky Divers--jumped too late |
| | 4 Alley Cats--Ran out of cat nip |
| | 1 Misfits--Fit but missed |
| | 5 Rock & Rollers--Deposed by the Hustle'rs |
| | 7 Rough Riders--Lost a horseman |
| | 9 EER'S--Star player abdicated |
| | 10 Nice & Easy--No tough scorer on team |
| | 6 Baby Dolls--Not constructed in balance. |

Look for Marie Atkins to win Women's top prizes for series and high game.

Look for Mike Atkins to win top prize for Men's high game.

Look for Joe Cuthie to win Men's high series.

Note to league members: Don't blame the prophet if you disagree. If it doesn't work out this way, I'll hang up my crystal ball. By the next issue of Intercom we'll see who turns out to be the supreme "Prophet."

Rudy Spatarella

INTERCOM STAFF

Editor: Rudy Spatarella, Office Services, NJ
Co-Editor: Verna Miller, Data Processing
Consulting Editor: Gene Kone
Copy Editor: Carolyne Elenowitz, Publications
Composition: Marianna LoGiudice, Publications
Layout: Diane Rhodes, Publications
Printing: Arthur Spatarella
Distribution: Mary Ann Battagliotti

REPORTERS

Peg Riker Accounting
Joanne Biley Advertising
Cathy Uffer Subscriptions
Ann Burgmeyer Publications
Lori Churgin Financial
Peter Coccorese Printing and Mailing
Ruth Edmiston Spectrum
Esther Kelmenson Technical Activities
Janis Levine Member Services
Dolores Riker Corporate Services
Verna Miller Data Processing
Fernando Serrano Offices Services, NY
Millie Smith Field Services
Carol Sragg Executive and Controller
Publications Sales
Mamie Bolding Standards
Carolyn Yankoski Shipping-Warehouse
& Dianna Suydam
Herb Taylor Art
Geri Potter Education
Gloria Aukland Washington Office
& Bill Herrold