

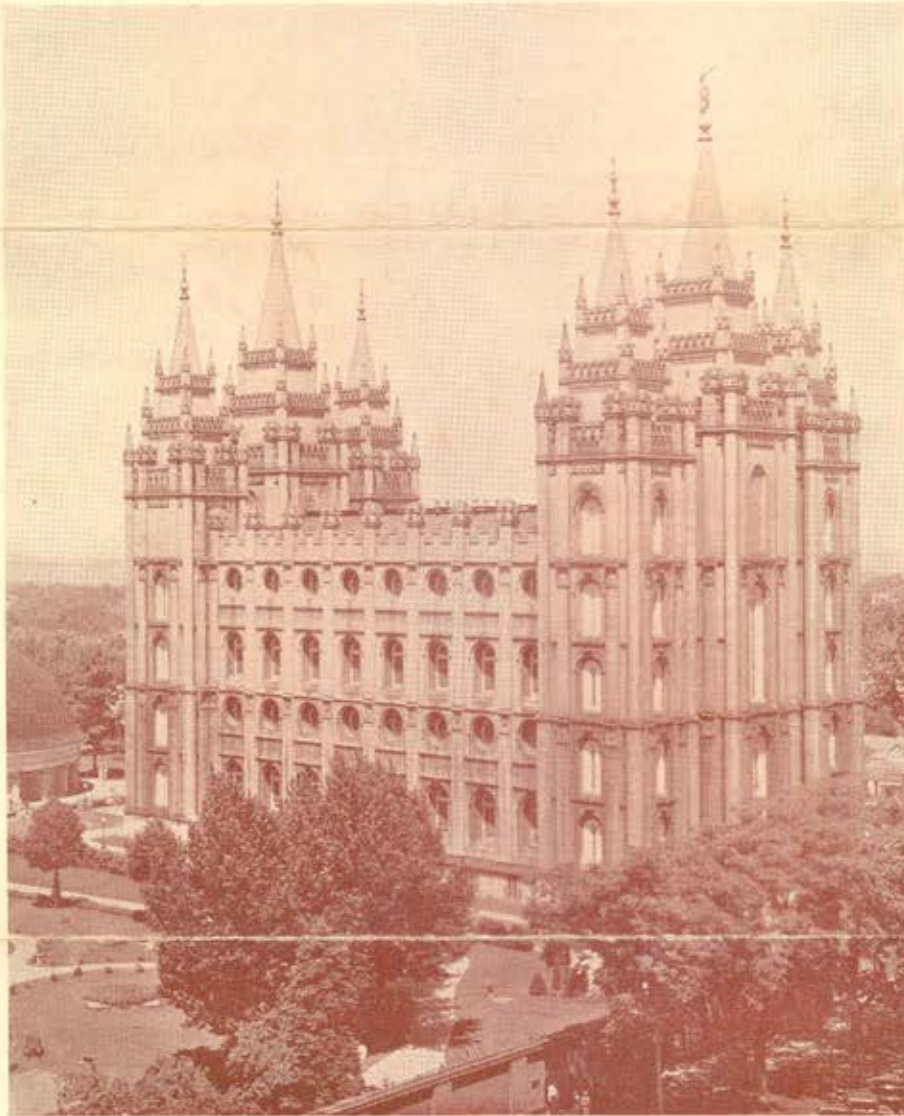


National Technical Meeting

Salt Lake City, Utah

Sept. 2-4, 1943

Headquarters: Hotel Utah



The Mormon Temple, Salt Lake City

A program designed to aid the war effort and meet the needs of western engineers has been arranged for the meeting. The program is comprised of five technical sessions and four technical conferences.

In accordance with AIEE wartime policies as adopted by the Board of Directors all programmed social activities have been omitted. However, Salt Lake City is the center of scenic America and is known for its hospitality. Members and guests will be most welcome, and there will be opportunities for informal get-togethers, visits to nearby mountains and canyons, as well as swimming in Salt Lake. Those desiring to participate should inquire at the registration desk.

ADVANCE COPIES OF PAPERS

Preprints of technical papers may be obtained by mail by remitting price indicated to the A.I.E.E. Order Department, 33 West 39th Street, New York, N. Y.; if purchased at A.I.E.E. headquarters or at the meeting 5c less per copy. For convenience an order form is enclosed. Only numbered papers will be available in advance-copy form. Mail orders (particularly from out-of-town members) are advisable, inasmuch as an adequate supply of each paper at the meeting cannot be assured. Coupon books in \$5.00 denominations are available for those who wish to avoid remittance by check or otherwise. Most of the papers ultimately will be published in *ELECTRICAL ENGINEERING* or the *TRANSACTIONS*.

Wednesday, September 1

2:00 p.m.—Advance Registration

Thursday, September 2

9:00 a.m.—Registration

9:30 a.m.—Opening of Meeting

A. LeRoy Taylor, Presiding

9:45 a.m.—Theory and Machinery

A. LeRoy Taylor, Presiding

- 43-137. Turn-Ratio of the Capacitor Motor. Thos. C. McFarland, Univ. of Calif. 20 cents by mail.
- 43-136. Some Measures of Electrical Brush Disintegration. M. S. Coover and E. E. Jones, Iowa State College. 15 cents by mail.
- 43-138. Temperature Limits and Measurements for Rating of D-C Machines. F. A. Compton, Jr., General Electric Co. 20 cents by mail.
- 43-144. Electronic Control of D-C Motors. K. P. Puchlowski, Westinghouse Elec. and Mfg. Co. 25 cents by mail.

2:00 p.m.—Inspection of U. S. Bureau of Mines and University of Utah Laboratories

7:30 p.m.—Conference on Metallurgy

E. W. Schilling, Presiding

- CP.* Physical Aspects of Copper for Electrical Use. P. H. Brace, Westinghouse Elec. and Mfg. Co.
- CP.* Metallurgical Problems Arising from the Use of Copper in Electrical Equipment. E. R. Parker, General Elec. Co.
- CP.* Metallurgy Production of Ferro-Alloys in Western States. S. F. Ravitz, U. S. Bureau of Mines
- CP.* Production of Light Metals. H. W. St. Clair, U. S. Bureau of Mines
- CP.* Quantitative Spectrographic Analysis. Graham Marks

7:30 p.m.—Conference on Communication and Electronics

A. L. Albert, Presiding

Round table discussion of methods of teaching communication and ultra-high frequency

Address, "Electronics—A Tool for Industry." R. H. Rogers, General Elec. Co.

CP.* Use of Electronics in Metallurgical Research. E. V. Potter

Friday, September 3

9:30 a.m.—Electrical Equipment for Military Aircraft

Lt. Colonel T. B. Holliday, Presiding

- 43-140. Radio Noise Elimination in All-Metal Aircraft. Fred Foulon, Douglas Aircraft Co. 30 cents by mail.
- 43-145. High-Tension Ignition Cable Design for Aircraft. H. H. Wermine, Belden Mfg. Co. 15 cents by mail.
- 43-149. Parallel Operation of Airplane Alternators. D. W. Exner, Westinghouse Elec. and Mfg. Co. 15 cents by mail.
- 43-146. Aircraft Transformers—Small and Light. O. Kiltie, General Elec. Co. 15 cents by mail.
- CP.* Aeroplane Instruments. R. L. Moeller, General Elec. Co.

9:30 a.m.—Selected Subjects

J. M. Gaylord, Presiding

- 43-134. Effect of Frequency on Let-Go Currents. C. F. Dalziel and Eric Ogden, Univ. of Calif. and C. E. Abbott, U. S. Army Signal Corps. 20 cents by mail.
- 43-135. Effect of Wave Form on Let-Co Currents. C. F. Dalziel, Univ. of Calif. 25 cents by mail.
- 43-139. The Automatic Welding Machine Starter and Its Relation to Maximum Utilization of Power and Facilities. N. E. Porter, Permanente Metals Corp. 15 cents by mail.



Mirror Lake—in the Uinta Mountains—About a Two-hour Motor Drive from Salt Lake City

Abstracts of numbered papers



U. S. Bureau of Mines Laboratory, which will be Visited Thursday Afternoon

43-150. A New Method of Measuring Contact Bounce. P. H. ACO.** Estes, General Elec. Co. 15 cents by mail.

12:00 m.—Luncheon Conference for Students, Branch Counselors, and National Officers

2:00 p.m.—Power Transmission

A. C. Kelm, Presiding

43-133. Lightning Surges Transferred from One Circuit to Another through Transformers. P. L. Bellaschi, Westinghouse Elec. and Mfg. Co. 25 cents by mail.

43-151. The Effects of Mutual Induction between Parallel Transmission Lines on Current Flow to Ground Faults. J. I. Holbeck and M. J. Lantz, Bonneville Power Administration. 15 cents by mail.

43-152. A New Simple Calculator of Load Flow in A-C Networks. W. E. Enns, Portland General Elec. Co. 15 cents by mail.

43-141. Application of 720-Cycle Carrier to Power Distribution Circuits. J. L. Woodworth, General Elec. Co. 30 cents by mail.

2:00 p.m.—Conference Symposium on Lighting

S. G. Hibben, Presiding

CP.* The Historical Episode of the Lighting of the Mormon Temple. S. G. Hibben, Westinghouse Elec. and Mfg. Co.

CP.* Saving Materials in Industrial Lighting Systems. F. C. Winkler and H. G. Barnett, Westinghouse Elec. and Mfg. Co.

CP.* Uses of Electricity and Light in the Metal and Coal Mines of Utah. T. A. Robinson, U. S. Smelting, Refining, and Mining Co.

CP.* Ultraviolet Light Sources in Analyzing Ores. H. T. Plumb, Consulting Engineer

3:30 p.m.—Conference on Effect of Altitude on Rating, Testing, and Operation of Electrical Apparatus

P. L. Bellaschi, Presiding

CP.* Review and Discussion of Present Standards. P. L. Bellaschi, Westinghouse Elec. and Mfg. Co.

CP.* Recent Testing

CP.* Operating Experience. L. W. Robertson, Public Service Co. of Colorado

Saturday, September 4

9:30 a.m.—Student Technical Session

9:30 a.m.—Protective Devices

J. B. MacNeill, Presiding

43-147. A New Type Carrier Relay Protection. E. M. Wood, Hydro-Electric Power Commission of Ontario, F. A. A. Baily, Canadian Marconi Co., and H. W. Haberl, Montreal Lt., Heat, and Pr. Cons. 20 cents by mail.

43-142. Dethermalizing Arc Quenchers. L. F. Hunt, Southern Calif. Edison Co., Ltd., and F. H. Cole, Cole Elec. Co. 15 cents by mail.

43-148. Development, Tests and Operating Record of the ACO.** Dethermalizer Arc Quencher. F. H. Cole, Cole Elec. Co., and C. P. Garman, Bureau of Pr. and Lt., City of Los Angeles. 25 cents by mail.

43-143. A New One-Cycle Directional-Overcurrent Relay. W. C. Morris, General Elec. Co. 15 cents by mail.

11:00 a.m.—Conference on Mining—Introductory to afternoon excursion

CP.* Utah Copper Mining

CP.* Copper Smelting

CP.* Uses of Electricity in Copper Mining

2:00 p.m.—Special Excursion to Utah Copper Mine, Mills, and Smelter

CP.* Conference paper; no advance copies are available; not intended for publication in TRANSACTIONS.

ACO.** Advance copies only available; not intended for publication in TRANSACTIONS.



Hotel Utah (Meeting Headquarters), Salt Lake City

Trip to Utah Copper Mine

In conjunction with the conference on metallurgy and the conference symposium on lighting a special excursion has been arranged for 2 p.m., Saturday, September 4, to the Utah Copper Mine, Mills, and Smelter. As copper is one of the most critical materials and the electrical industry was one of the largest users of copper, this trip should be most instructive. A first-hand knowledge of the industry and the physical properties of copper, together with its uses, should aid the conservation of this critical material.

ADVANCE REGISTRATION

Members who will attend the meeting should fill in and mail the Advance Registration Card promptly. A registra-

tion fee of \$2.00 will be charged all nonmembers except Enrolled Students and the immediate families of members.

RESERVATIONS

To secure hotel and transportation accommodations reservations should be made as early as possible. For hotel reservations members should write directly to the hotel preferred. If assistance is desired, please write to C. A. Wolfrom, chairman, hotels committee, P. O. Box 399, Salt Lake City 10, Utah.

HOTEL RATES

	Rooms with bath	
	Single	Double
Hotel Utah (headquarters) South Temple and Main Streets	\$3.30 - 8.00	\$4.40 - 10.00
Newhouse Hotel Fourth South and Main Streets	3.85† - 5.50†	5.50† - 7.50†
Temple Square Hotel West Temple and South Temple Streets	2.20 - 5.00	3.30 - 7.00
	*Twin beds	†With shower bath

Other hotels with rates from \$1.65 to \$3.50 per day are as follows:
Semloh Hotel, Second South and State Streets
New Grand Hotel, Fourth South and Main Streets
Moxum Hotel, Fourth South and State Streets

NATIONAL TECHNICAL MEETING COMMITTEE

A. LEROY TAYLOR, *General Chairman*
J. A. McDONALD, *Publicity*
H. T. PLUMB, *Technical Program*
A. C. KELM, *Finance*
C. A. WOLFROM, *Hotels*
L. D. HARRIS, *Student Activities*

H. H. HENLINE, *National Secretary*

Issued by
AMERICAN INSTITUTE OF ELECTRICAL ENGINEERS
33 West 39th Street, New York, N. Y.

PRINTED IN U. S. A.