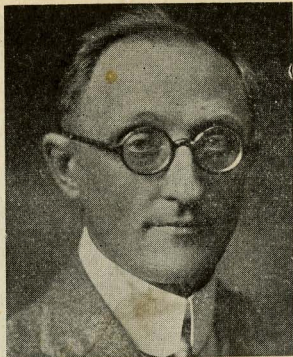


## R. E. Hellmund

(A'05, M'09, F'13)

Lamme Medalist 1929



R. E. HELLMUND

THE second individual to be awarded the Lamme Medal of the Institute was Rudolf Emil Hellmund. Mr. Hellmund is widely known for his inventive genius, some 300 patents in the United States and other countries having been granted him. He was born at Gotha, Germany, February 2, 1879. He graduated from the Technical Institute of Ilmenau, Germany, worked 3 years, then continued his studies at Charlottenburg University, Berlin, graduating

in 1899 with the degree of electrical engineer. After being engaged in the development work in Germany, he came to the United States in 1903. After doing other engineering work, he was associated in 1905 with William Stanley at Great Barrington, Mass. During 1905-07, he was in the engineering department of the Western Electric Company at Hawthorne, Ill., in charge of all a-c motor design for the company. Since October 1907, he has been with the Westinghouse Electric and Manufacturing Company. After being in charge of the development of various kinds of induction motors, he was placed in charge of all designs of d-c and a-c railway motors. In 1907 he was assigned miscellaneous consulting duties, and in 1921 was appointed engineering supervisor of development. In 1926 he was made chief electrical engineer and in 1933 was given the position of chief engineer of the company. Mr. Hellmund has presented many papers before the Institute and has been a member of the standards committee since 1930. In the past 2 years he has devoted much attention to the development of air conditioning equipment.

tically all the designs and calculations on a-c machines, he himself designing many of the most important generators that were built by the company. Through Doctor Steinmetz, with whom he worked closely for many years, he prepared many of the standards adopted by the A.I.E.E. Doctor Foster is now consulting engineer (retired) for the General Electric Company, and lives at Schenectady. He was a member of the Institute's committee on electrical machinery 1920-30 (chairman 1928-29), and of the meetings and papers (now technical program) committee 1928-29.