

AMERICAN INSTITUTE of
ELECTRICAL ENGINEERS

FORTY-FOURTH

Summer Convention

DENVER, COLORADO

June 25 - 29, 1928

Headquarters

COSMOPOLITAN HOTEL

1884

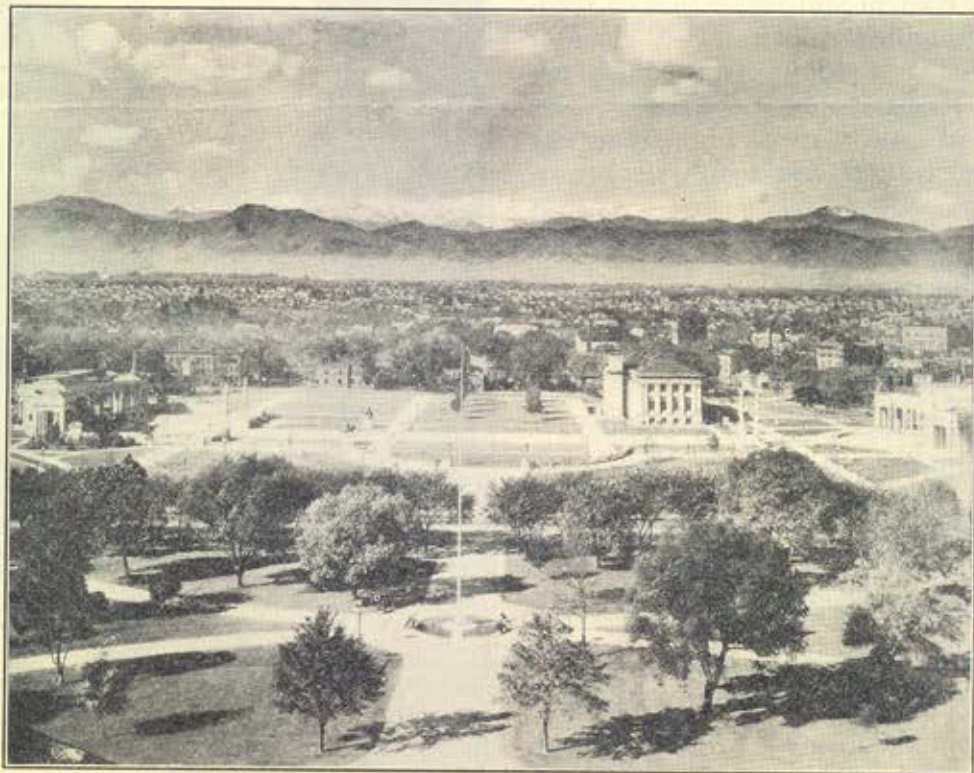


1928

AMERICAN INSTITUTE OF ELECTRICAL ENGINEERS

33 WEST 39TH STREET

NEW YORK



LOOKING ACROSS DENVER TOWARD THE ROCKIES

(Photo from Denver Tourist Bureau)

Summer Convention

American Institute of Electrical Engineers

A PROGRAM of excellent technical papers and most enjoyable recreational features has been scheduled for the 1928 Summer Convention which will be held in Denver, June 25-29, with headquarters at the Cosmopolitan Hotel.

Technical Session

Subjects alive in the minds of engineers will be treated in the technical papers. They will include such topics as surge-voltage investigations on transmission lines, control and protection of feeders for electrified railways, a-c. elevator motors, electric welding of pipe lines, telephony, transmission experiences, extinction of a-c. arcs, high-frequency supervisory control and geophysical prospecting.

The year's advances in all lines of electrical engineering will be described in the annual reports of the Institute's Technical Committees.

Section and Branch Conferences

The annual conference of officers and delegates from Sections will be held on the first day of the meeting, and there will also be a conference of officers, Branch Counselors and delegates.

Annual Business Meeting of the Institute

The Annual Business Meeting of the Institute will be held at 9:30 a.m. Tues-

day, June 26th, at the Cosmopolitan Hotel.

Trips

Chief among the entertainment features will be an all-day trip through Denver's Mountain Parks, on Thursday, June 28. Private cars will take members through the pioneer town of Golden at the foot



PORTALS OF BEAR CREEK
(Photo from Denver Tourist Bureau)

of Lookout Mountain. The climb up the mountain will be over the famous "Engineers Lariat Trail," to an elevation of 7600 ft. At the top a stop will be made to

visit the grave of Buffalo Bill and Pahaska Tepee and to view the broad panorama of mountains and plains. The route will then lead over Genesee Mountain to Bergen Park and down the beautiful Bear Creek canyon on the return to Denver.

Trips may be made to the Valmont Steam Plant of the Colorado Public Service Company, Broadcasting Station KOA, stockyards and packing plants and other interesting points.

In connection with the convention a most attractive tour of Yellowstone Park and other places has been arranged to start immediately after the convention closes, June 29. Details of this trip are published in the May and June Journals.

Members may join this tour at any point along the route and also after reaching Denver. Parties desiring to make the trip from Denver to Yellowstone Park and return may do so.

Information on these and other points in connection with the tour may be obtained from local ticket agents or from



BOULDER CANYON HYDRO PLANT



BARKER RESERVOIR OF PUBLIC SERVICE COMPANY OF COLORADO

the Henry Tours, Inc., 565 Fifth Avenue, New York, N. Y. This agency will handle the official tour.

Other enjoyable scenic trips may be taken out of Denver. Probably some who will not take the Yellowstone tour will take some of the other trips after the convention closes. The regular summer excursion rates from points east of the Missouri River include a free side trip to Colorado Springs, the center of the Pike's Peak region, or to Boulder, the gateway to the Glacier district.

Popular Colorado side trips may be made as follows:

One-day trips through Boulder and the Glacier Region for \$6.80 and \$9.50.

One-day trip through the Moffat Tunnel, \$6.50.

Two-day all-expense auto tour through Rocky Mountain National Park, Big Thompson Canyon and Lookout Mountain \$33.00.

Three-day all-expense auto tour as above, except an extra night spent at Grand Lake, \$39.00.

Attendants will be present at the Cosmopolitan Hotel Headquarters so that reservations and travel information may be available.

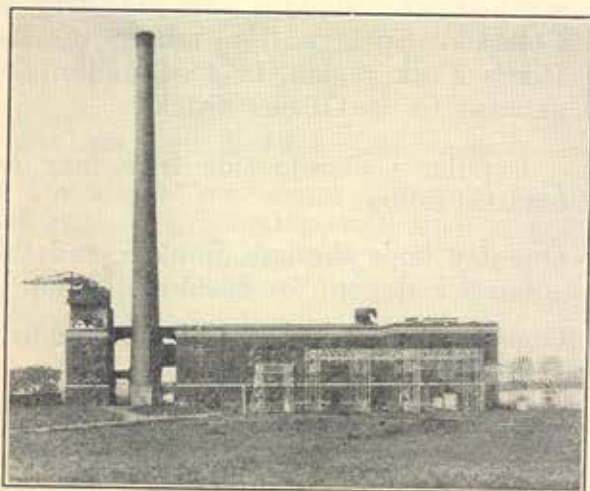
Entertainment

Golf and tennis tournaments will be played at the leading country clubs of Denver.

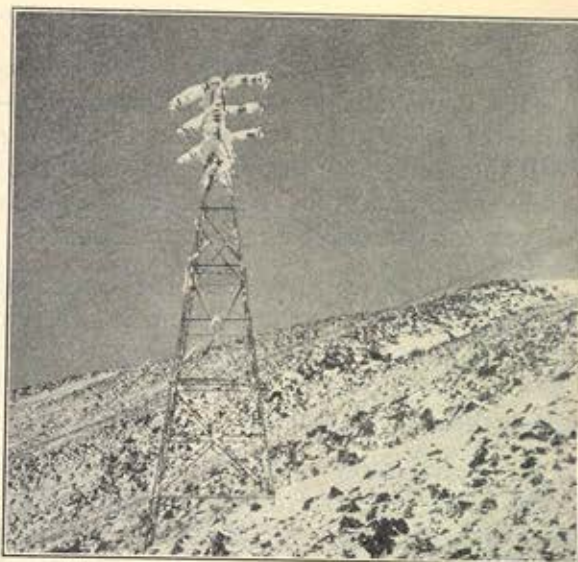
There will also be a reception and a dinner, both of which will be followed by dancing.

Ladies' Entertainment

The ladies attending will, of course, enjoy the events already mentioned, and in addition special plans have been laid for their entertainment, including teas, card parties, sightseeing and shopping tours and golf, tennis and swimming. The accompanying Ladies' Program gives a schedule of the ladies' events.



VALMONT STEAM PLANT



90-KV. TRANSMISSION TOWER AT ARGENTINE PASS

Railroad Rates

Regular Summer excursion rates will be available for members taking the trip to Denver who do not participate in the Yellowstone tour.

Hotel Reservations

The new Cosmopolitan Hotel, with 460 rooms, has been designated Convention Headquarters. The following room rates have been established:

All rooms with bath. Most double rooms with twin beds.

Court rooms	single	\$4.00	double	\$6.00
Outside rooms	single	{ \$4.50 }	double	{ \$7.00 }
		{ \$5.00 }		{ \$8.00 }

Corner rooms double, \$10.00 and \$12.00

Three-room suites for three to six persons, \$25.00 to \$30.00

Additional room space has been arranged for at the Brown Palace Hotel, the Shirley-Savoy, and other hotels having comparable accommodations and rates. A limited number of single rooms with bath at \$3.00 will be available with in a few blocks of the Cosmopolitan, but it is expected that, as usual, the demand for single rooms will exceed the supply,

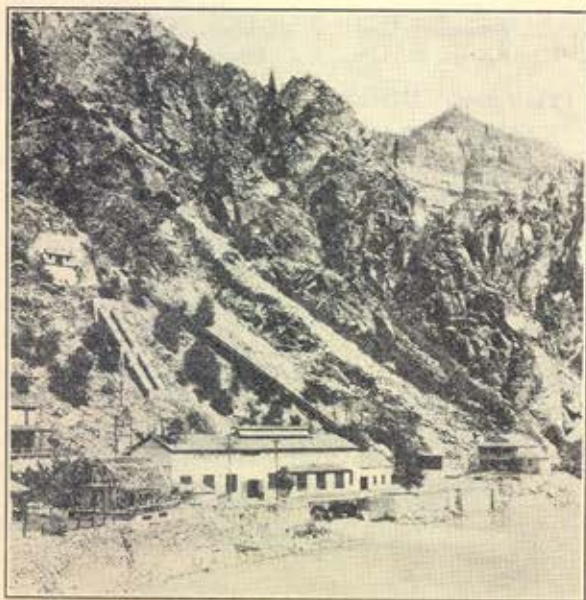
and visitors are urged to arrange for sharing double rooms. Personal preference for rooms outside the Cosmopolitan will be arranged for as far as possible, but, owing to other conventions in the city, they cannot be guaranteed in advance.

Reservations should be addressed to the A. I. E. E. Hotel Committee, Cosmopolitan Hotel, Denver, Colorado, and can be made with the Committee's assurance that comfortable quarters will be provided in or near the Convention Headquarters Hotel.

The blank form accompanying this announcement should be used for making reservations and for advance registration. This should be filled in by all who plan to attend the convention and mailed as promptly as possible. Those who take the Yellowstone tour will have reservations made for them by the bureau which is handling the tour.

Committees

The General Convention Committee for the meeting is being directed by H. S.



SHOSHONE POWER PLANT



DENVER-SALT LAKE TELEPHONE LINE CROSSING THE CONTINENTAL DIVIDE

Sands, chairman; W. H. Edmunds, vice-chairman, and R. B. Bonney, secretary. The officers of the various sub-committees are as follows: *Entertainment*—B. Shubart, chairman; H. B. Dwight, vice-chairman; *Finance*—W. C. Sterne, chairman; G. E. McCarn, vice-chairman; *Meetings and Papers*—H. P. Charlesworth, chairman; L. N. McClellan, vice-chairman; *Registration*—A. L. Jones, chairman; W. C. DuVall, vice-chairman; *Sections*—W. B. Kouwenhoven, chairman; V. L. Board, vice-chairman; *Ladies Entertainment*—Mrs. A. L. Jones, chairman; Mrs. L. N. McClellan, vice-chairman; *Hotel*—H. B. Barnes, chairman; J. H. McCable, vice-chairman; *Publicity*—J. F. Greenawalt, chairman; H. H. Argabrite, vice-chairman; *Transportation*—W. H. Edmunds, chairman; G. M. Moore, vice-chairman; *Student Branches*—J. L. Beaver, chairman; H. S. Evans, vice-chairman.

F. L. HUTCHINSON,
National Secretary.

and visitors are urged to arrange for sharing double rooms. Personal preference for rooms outside the Cosmopolitan will be arranged for as far as possible, but, owing to other conventions in the city, they cannot be guaranteed in advance.

Reservations should be addressed to the A. I. E. E. Hotel Committee, Cosmopolitan Hotel, Denver, Colorado, and can be made with the Committee's assurance that comfortable quarters will be provided in or near the Convention Headquarters Hotel.

The blank form accompanying this announcement should be used for making reservations and for advance registration. This should be filled in by all who plan to attend the convention and mailed as promptly as possible. Those who take the Yellowstone tour will have reservations made for them by the bureau which is handling the tour.

Committees

The General Convention Committee for the meeting is being directed by H. S.



SHOSHONE POWER PLANT



DENVER-SALT LAKE TELEPHONE LINE CROSSING THE CONTINENTAL DIVIDE

Sands, chairman; W. H. Edmunds, vice-chairman, and R. B. Bonney, secretary. The officers of the various sub-committees are as follows: *Entertainment*—B. Shubart, chairman; H. B. Dwight, vice-chairman; *Finance*—W. C. Sterne, chairman; G. E. McCarn, vice-chairman; *Meetings and Papers*—H. P. Charlesworth, chairman; L. N. McClellan, vice-chairman; *Registration*—A. L. Jones, chairman; W. C. DuVall, vice-chairman; *Sections*—W. B. Kouwenhoven, chairman; V. L. Board, vice-chairman; *Ladies Entertainment*—Mrs. A. L. Jones, chairman; Mrs. L. N. McClellan, vice-chairman; *Hotel*—H. B. Barnes, chairman; J. H. McCable, vice-chairman; *Publicity*—J. F. Greenawalt, chairman; H. H. Argabrite, vice-chairman; *Transportation*—W. H. Edmunds, chairman; G. M. Moore, vice-chairman; *Student Branches*—J. L. Beaver, chairman; H. S. Evans, vice-chairman.

F. L. HUTCHINSON,
National Secretary.

Tentative Program

Mountain Standard Time is indicated throughout this program

MONDAY, JUNE 25

- 9:00 a.m. Registration
- 10:00 a.m. Section Delegates' Meeting
- 12:30 p.m. Section and Branch Delegates' Luncheon
- 2:00 p.m. Section Delegates' Meeting
(Continued)
- 4:00 p.m. Branch Delegates' Meeting

TUESDAY, JUNE 26

- 9:30 a.m. Annual Business Meeting of the Institute
- President's Address
- Presentation of Prizes for Papers
- Technical Session on Surge-Voltage Investigations
- Surge-Voltage Investigation on Transmission Lines*, W. W. Lewis, General Electric Co.
- Lightning Investigations on New England Power Company's System*, E. W. Dillard, New England Power Co.
- Surge-Voltage Investigation on 140-kv. System of Consumers Power Co.*, J. G. Hemstreet and J. R. Eaton, Consumers Power Co.
- Surge-Voltage Investigation on 132-kv. Transmission Lines of American Gas and Electric Co.*, Phillip Sporn, American Gas & Electric Co.
- Surge-Voltage Investigation on 220-kv. System of Pennsylvania Power & Light Co.*, N. N. Smeloff, Pennsylvania Power & Light Co.
- 2:00 p.m. Golf and Tennis Tournaments
- 8:30 p.m. Lecture, *Geophysical Methods of Prospecting*
Dr. C. A. Heiland, Colorado School of Mines
- 9:30 p.m. Reception

WEDNESDAY, JUNE 27

- 9:30 a.m. Technical Committee Reports, Sessions B and C

SESSION B

- Research*, F. W. Peck, Jr., Chairman
Electrophysics, Vladimir Karapetoff, Chairman
Education, P. M. Lincoln, Chairman
Instruments and Measurements,
E. S. Lee, Chairman
Communication, H. W. Drake, Chairman
Production and Application of Light,
P. S. Millar, Chairman
Electrochemistry and Electrometallurgy,
G. W. Vinal, Chairman
Electrical Machinery, F. D. Newbury, Chairman

SESSION C

- Power Transmission and Distribution*,
Philip Torchio, Chairman
Protective Devices, F. L. Hunt, Chairman
Automatic Stations,
Chester Lichtenberg, Chairman
Applications to Iron and Steel Production
A. G. Pierce, Chairman
Applications to Mining Work,
W. H. Lesser, Chairman
Applications to Marine Work,
W. E. Thau, Chairman
Transportation, J. V. B. Duer, Chairman
Electric Welding, J. C. Lincoln, Chairman

- 12:30 p.m. Directors' Luncheon-Meeting
- 2:00 p.m. Technical Session on Electrified Railways

- High-Speed Circuit Breakers*, J. W. McNairy, General Electric Co.
- High-Speed Circuit Breakers for Railway Electrification*, H. M. Wilcox, Westinghouse Electric & Mfg. Co.
- Operating Experience with High-Speed Circuit Breakers*, B. F. Bardo, New York, New Haven & Hartford Railroad.
- Arrangement of Feeders and Equipment for Electrified Railways*, R. B. Morton, of Gibbs and Hill.
- Protection of Electric Locomotives and Cars to Operate with High-Speed Circuit Breakers*, E. H. Brown, Pennsylvania Railroad.
- The High-Speed Circuit Breaker in Railway Service*, W. P. Monroe and R. M. Allen, Illinois Central Railroad.

- 7:00 p.m. Convention Dinner-Dance

TENTATIVE PROGRAM
(Continued)

THURSDAY, JUNE 28

- 9:30 a.m. Mountain Trip
Returning about 4:30 p.m.
- 8:00 p.m. Theater Party

FRIDAY, JUNE 29

- 9:30 a.m. Technical Sessions E and F

SESSION E

A Formula for Minimum Horizontal Spacing of Transmission-Line Conductors, P. H. Thomas, Consulting Engineer.

Transmission Experiences of the Public Service Co. of Colorado, M. S. Coover, University of Colorado, and W. D. Hardaway, Public Service Co. of Colorado.

A-C. Elevator Motors of the Squirrel-Cage Type, E. E. Dreese, Lincoln Electric Co.

Electric Welding of Pipe Lines, J. D. Wright, General Electric Co.

SESSION F

Utilization of Lodgepole Pine as Pole Timber, R. W. Lindsay, Mountain States Telephone & Telegraph Co.

Carrier Systems on Long-Distance Telephone Lines, H. A. Affel and C. S. Demarest, American Telephone & Telegraph Co., and C. W. Green, Bell Telephone Laboratories, Inc.

Superimposed High-Frequency Currents for Circuit-Breaker Control, L. R. Ludwig, Westinghouse Electric & Mfg. Co.

Extinction of an Alternating-Current Arc, Joseph Slepian, Westinghouse Electric & Mfg. Co.

- 1:30 p.m. Golf and Tennis Finals
- 7:20 p.m. Start of Tour to Yellowstone Park, etc.

✓ **Ladies' Program**

(The ladies are invited to all events of the convention. The following features are listed as being of special interest.)

MONDAY, JUNE 25

- 8:00 p.m. Informal Reception

TUESDAY, JUNE 26

- 10:00 a.m. Golf, Tennis and Swimming
- 2:00 p.m. Drive Around Denver and Tea and Entertainment at Cherry Hills Country Club
- 8:30 p.m. Lecture on Geophysics by Dr. C. A. Heiland, Colorado School of Mines
- 9:30 p.m. Reception and Dancing

WEDNESDAY, JUNE 27

- 11:00 a.m. Drive Up Lookout Mountain, Luncheon and Bridge at Mt. Vernon Country Club
Returning at 4:30 p.m.
- 7:00 p.m. Convention Dinner-Dance

THURSDAY, JUNE 28

- 9:30 a.m. All-Day Mountain Trip
Returning at 4:30 p.m.
- 8:00 p.m. Theater Party at the famous Elitch's Gardens

FRIDAY, JUNE 29

- 10:00 a.m. Finals in Golf, Tennis and Swimming
- Afternoon Shopping and Other Trips
- 7:20 p.m. Start of Tour to Yellowstone Park, etc.
-

2261

UNIVERSITY OF MICHIGAN LIBRARIES

THE UNIVERSITY OF MICHIGAN LIBRARIES
ANN ARBOR, MICHIGAN
This book is loaned to you by the University of Michigan Libraries
and is to be returned to the University of Michigan Libraries
at the expiration of the loan period indicated on the label
attached to this book. If you wish to renew this book,
please return it to the University of Michigan Libraries
before the expiration of the loan period.

UNIVERSITY OF MICHIGAN LIBRARIES

THE UNIVERSITY OF MICHIGAN LIBRARIES
ANN ARBOR, MICHIGAN
This book is loaned to you by the University of Michigan Libraries
and is to be returned to the University of Michigan Libraries
at the expiration of the loan period indicated on the label
attached to this book. If you wish to renew this book,
please return it to the University of Michigan Libraries
before the expiration of the loan period.