

Getting New Society Started

By JOE McLEAN

BLUE BELL, Pa. — Donald G. Fink, tapped for the post of general manager of the Institute of Electrical and Electronic Engineers, told Electronic News last week he will start to work on details of planning in October.

"I'll be spending the majority of my time at Philco Corp. until about Oct. 1," the head of the firm's research laboratory said. "I won't be getting into the new organization until after that date.

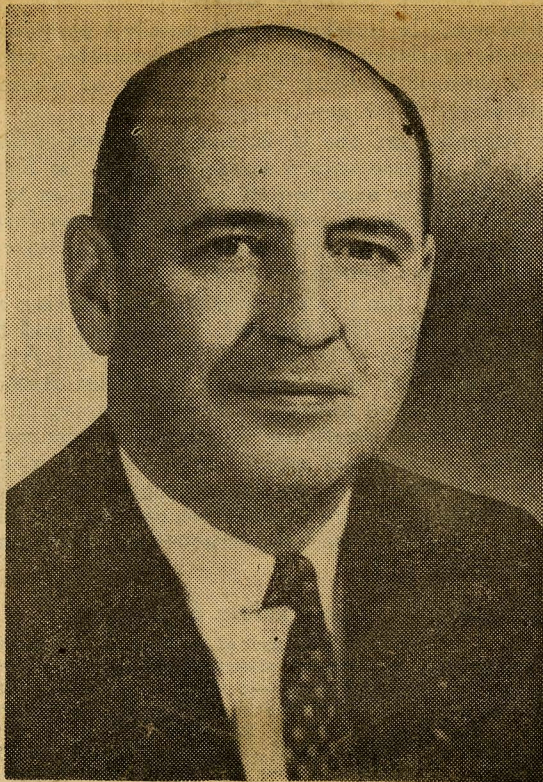
"Of course, I'm now secretary of the merger committee," he explained, noting that this entails considerable time and effort.

At present, he said, the merger committee, serving as a nominating committee, is polling the boards of both the Institute of Radio Engineers and American Institute of Electrical Engineers on a slate of 25 IEEE directors, one of whom has been nominated as a president and another as a vice-president.

If the slate is approved, he said, it will be made public and presented to the memberships of both organizations for a vote. This might be accomplished in a month or so if there are no hitches.

The slate of 25 nominees, he said, is the second order of business.

See MANAGER, Page 8



Donald G. Fink



George W. Bailey

D. G. Fink To Manage Institute

Bailey, Hibshman
Retained by IEEE

By NAT SNYDERMAN

NEW YORK. — Donald G. Fink has been named general manager of the new Institute of Electrical and Electronic Engineers, the presidents of the two professional societies from which it will be formed said last week.

In addition, George W. Bailey, executive secretary of the Institute of Radio Engineers, and Nelson S. Hibshman, executive secretary of the American Institute of Electrical Engineers, will be retained for at least two years although their titles may be changed.

No date was given last week for Mr. Fink's resignation from Philco Corp., Blue Bell, Pa., where he is director of the Scientific Laboratory. Dr. Bailey is executive secretary of the Institute of Radio Engineers.

The presidents of the AIEE and IRE, Warren H. Chase and Patrick E. Haggerty, said last week

See NEW, Page 8

Continued from Page One

that Mr. Fink will take office in January when the merger of the two societies into IEEE becomes effective. He was the unanimous choice of the 14-man merger committee for the post, they said.

Where the general manager's headquarters office will be in New York was not ascertained — both Mr. Fink and Dr. Bailey were on vacation last week. Industry sources declared, however, that Mr. Fink's headquarters initially, at least, will be in the IRE buildings at East 79th Street.

Report Confirmed.

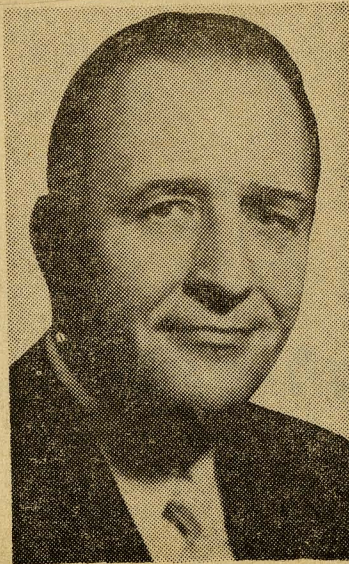
The information from IRE that Dr. Bailey will be retained as consultant to IEEE confirms an industry report published in these columns July 16.

Dr. Bailey became executive secretary of IRE in 1945 when membership totaled 13,000. Membership now is close to 100,000.

From 1944 through 1946, he served under Dr. Vannevar Bush, director, Office of Scientific Research and Development, as chief of the Scientific Personnel office. A dedicated radio amateur, he is a former president of the International Amateur Radio Union and the American Radio Relay League.

Born in Quincy, Mass., in 1887, Dr. Bailey received his A.B. degree from Harvard College in 1907 and spent 30 years in the shoe and rubber flooring manufacturing business before "retiring." It was only after his retirement with his hobby as a radio ham that he became internationally recognized as an organizational leader, Government consultant and science personnel leader.

As executive secretary of IRE, it is generally agreed that he conducted a strong and aggressive "secretariat" while avoiding serious opposition within the society.



Nelson S. Hibshman

secretary of AIEE since 1955, having joined the society three years earlier as assistant secretary.

Born in Harrisburg, Pa., in 1902, he received his Bachelor Degree in Electrical Engineering from Pennsylvania State College in 1924 and his Masters in Electrical Engineering from Lehigh University in 1927.

At Lehigh, he was an instructor in electrical engineering from 1924 to 1927, assistant professor from 1927 to 1933 and associate professor from 1933 to 1942.

Mr. Hibshman came to New York in 1942 as professor and head of the Electrical Engineering department at New York University where he stayed until 1944. He then became Dean of the School of Engineering at Pratt Institute of Technology, Brooklyn, until 1952.

He has also been a consultant on engineering for various industries.