

MOUNT HOOD LOOKS DOWN ON THE CONVENTION CITY

Pacific Coast Convention

American Institute of Electrical Engineers

Portland, Oregon



September 2-5, 1930

COME to Portland for the 1930 Pacific Coast Convention. A hearty welcome awaits you! A fine program has been arranged to appeal to the hardest "conventioner," while the recreation facilities offered to the vacationist by Portland and the surrounding territory will be found to meet your desires, whether they be for a comfortable chair on a resort porch overlooking the Pacific or for a strenuous fishing or mountain climbing trip.

Subjects of wide interest will be presented by well-known Institute members at the business sessions, while dancing, banqueting and golf are included in the entertainment. The inspection trips provided offer a widely diverse appeal, and, for those who can extend their visit for a few days, a wealth of opportunity for pleasure and enjoyment abounds.

The following pages contain information in which you and Mrs. "A. I. E. E.", who is especially invited, will be interested. The committee desires that your stay here be agreeable and profitable and to that end suggests you complete your plans to attend as soon as possible.

PROGRAM



The Multnomah Hotel is well equipped to serve as convention headquarters

Tuesday, September 2nd

- 9:00 A.M.—Registration at Convention Headquarters, Multnomah Hotel.
- 10:00 A.M.—Opening of the Convention.
- 10:30 A.M.—Technical session on Transmission.
- Value of Wood Applied to Steel Structures*
O. A. Austin, Ohio Insulator Company, Barberton, Ohio
- Critique of Ground Wire Theory*
L. V. Bewley, General Electric Company, Schenectady, N. Y.
- Influence of Polarity on High Voltage Discharges*
F. O. McMillan and E. C. Starr, Oregon State College, Corvallis, Ore.
- 2:00 P.M.—Technical session on Transmission
- Calculation of Performance of Oil Circuit Breakers*
A. C. Schwager, Pacific Electric Manufacturing Company, San Francisco, California
- Corona Tests at Stanford*
J. S. Carroll, Stanford University, Palo Alto, Calif.
- Studies in Strengths of Present Day Insulators*
K. A. Hawley, Locke Insulator Corporation, Baltimore, Md.

Wednesday, September 3rd

- 9:00 A.M.—Technical session on Power Stations
- Steam Power Development of Pacific Gas & Electric Company*
R. C. Powell, Pacific Gas & Electric Company, San Francisco, Calif.

Grounding Banks of Transformers with Neutral Impedances and Resultant Transient Conditions in Windings.

J. K. Hodnette and F. J. Vogel, Westinghouse Electric & Manufacturing Company, Sharon, Pa.

Relay Developments on Southern California Edison System

E. R. Stauffacher, Southern California Edison Company, Los Angeles, Calif.

Mercury Arc Rectifiers

O. K. Marti, American Brown Boveri Company, Camden, N. J.

2:00 P.M.—Technical session on Communication

Commercial Aircraft Radio-Phone Communication

R. H. Freeman, Boeing Air Transport, Incorporated, Seattle, Wash.

Harmonic Generation By Means of Grid Circuit Distortion

F. E. Terman, Stanford University, Palo Alto, Calif.

Power Station Communication Systems

R. B. Ashbrook and F. B. Doolittle, Southern California Edison Company, Los Angeles, Calif.

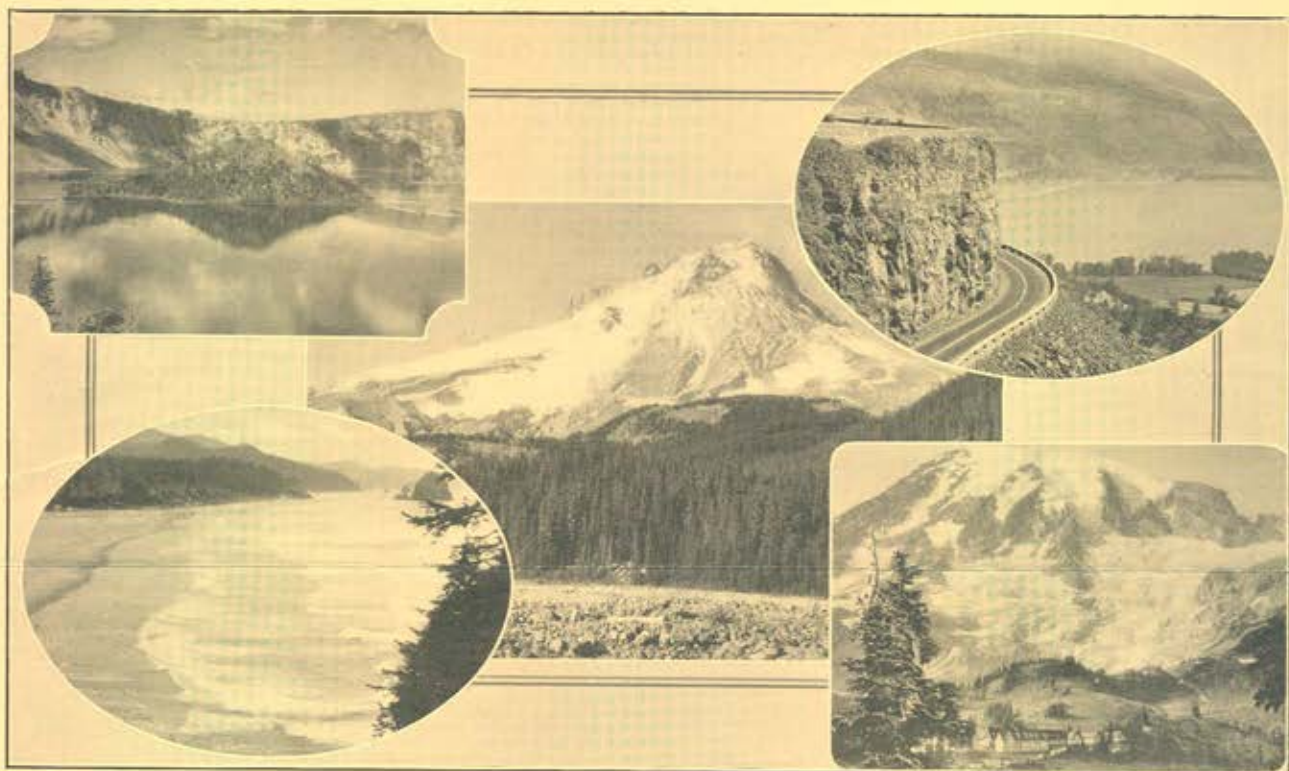
8:00 P.M.—Conference on Student Activities by Counselors Committee, Districts Nos. 8 and 9

Thursday, September 4th

- 9:00 A.M.—First Student Session.
- AFTERNOON—Recreation and Golf Tournament
- EVENING—Informal Banquet



Portland is the thirteenth port in the United States



Portland is in the geographic center of a veritable wonderland of interesting scenery
 Upper left—Crater Lake, Oregon
 Center—Mount Hood from the Loop Road at White River
 Upper right—Rowena Loops on Columbia River Highway
 Lower left—Cannon Beach, Oregon
 Lower right—Rainier National Park, Washington

Friday, September 5th

9:00 A.M.—Technical session on Research and Development

Pennsylvania Electrification

J. V. B. Duer, Pennsylvania Railroad, Philadelphia, Pa.

Electric China Firing Kiln

George S. Smith, University of Washington, Seattle, Wash.

Forecasting Precipitation

A. F. Gorton, Scripps Institute of Oceanography, La Jolla, Calif.

Electricity's Part in Copper Production

R. J. Corfield, Utah Copper Company, Salt Lake City, Utah

2:00 P.M.—Second Student Session

Saturday, September 6th

MORNING—Choice of Inspection trips:

Ariel Development of Northwestern Electric Company on Lewis River (6 hours)

Oak Grove Development of Pacific Northwest Public Service Company on Clackamas River (all day)

Camas Paper Mill of Crown-Willamette Paper Company, Camas, Wash. (5 or 6 hours)

Ladies' Program

The ladies are invited to all events, including the three regularly scheduled inspection trips. In addition special events are being provided for them each afternoon by the Ladies' Entertainment Committee as follows:

TUESDAY, SEPTEMBER 2

AFTERNOON—Drive around the city through Portland's beautiful residential districts, followed by tea at the White Owl Tea Room on Council Crest.

EVENING—Reception and dance at the Multnomah Hotel.

WEDNESDAY, SEPTEMBER 3

Luncheon at the Waverly Country Club, followed by a visit to the Lloyd Frank gardens on Palatine Hill, which are among the finest in the Northwest.

THURSDAY, SEPTEMBER 4

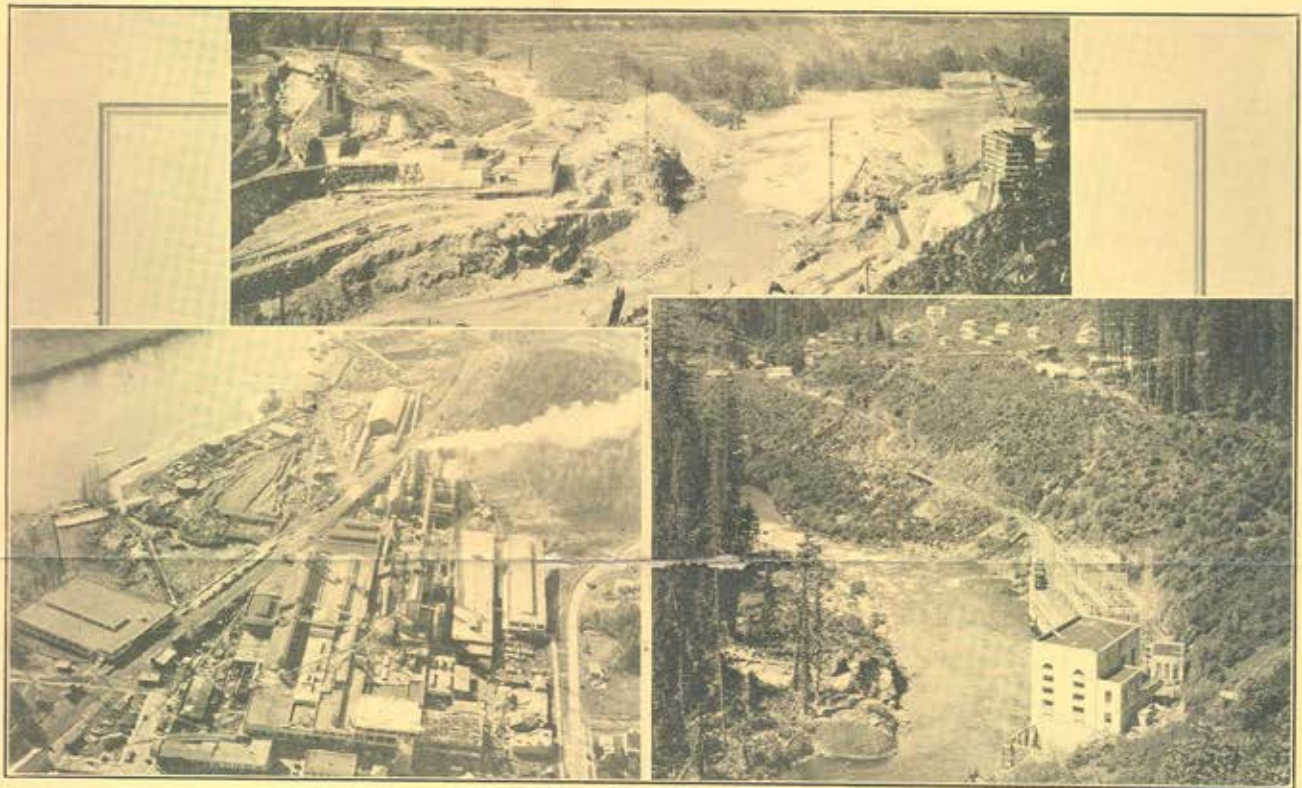
AFTERNOON—Bridge tea and Putting Contest at the Multnomah Golf Club.

EVENING—Informal banquet at Portland Golf Club.

FRIDAY, SEPTEMBER 5

Motor trip on the famous Columbia River Highway. (Such men as might be interested in this feature are invited to accompany the ladies on this trip.)

In addition to these regularly planned events, the Ladies' Entertainment Committee will be pleased to assist visitors in arranging trips to other places in and around Portland.



Inspection trips are scheduled to the above points of interest

Upper—Ariel dam site on Lewis River

Lower left—Crown-Willamette Paper Mill at Camas

Lower right—Oak Grove Plant on Clackamas River

Inspection Trips

Three inspection trips have been scheduled to take place concurrently on Saturday, September 6. These cover widely different kinds of installations to appeal to the differing interests of electrical engineers. Each trip will consume the best part of the day, will include lunch and will entail no expense to any registered member or guest. Visiting ladies are invited.

1. At the Oak Grove development of the Pacific Northwest Public Service Company on the Clackamas River a second 40,000-hp. reaction water wheel and a 30,000-kva. generator are being installed, requiring an addition to the powerhouse and a new penstock. This plant, operating at 860-ft. head contains the highest head reaction turbine in the world. Delegates will leave Portland by auto or inter-urban train about 8:00 A.M., later transferring to the company's speeder, paralleling the Clackamas River through rugged forest country.

2. Those choosing the trip to the Ariel project of the Northwestern Electric Company on the Lewis River north of Portland will find the dam construction of a 180,000-kw. development in full swing. This dam will be of single arch construction approximately 200 feet in height, with a gravity section at each end, the crest length being 1,295 feet. Delegates will travel to and from this site by automobile.

3. The trip to the Crown-Willamette Paper Mill at Camas, Wash., offers inspection of one of the largest specialty paper mills in the world. Recent additions to this mill

include a 100-ton bleaching plant and steam generating equipment totaling 6,000 kw. In addition to the power generated from the plant's own boilers, a block load of 12,000 kw. is being purchased. Included among the 1,400 motors with a load of 16,000 kw., are some of the most modern drives and controls. The plant is 45 minutes by automobile from Portland over the North Bank Columbia Highway.

Other Inspection Trips

Many installations of interest to electrical engineers can be viewed in and around Portland at times to suit the convenience of visitors by special arrangement with the committee. An interesting tour would include the hog fuel steam plants of the Northwestern Electric Company and the Pacific Northwest Public Service Company. In the latter has just been installed the largest boiler in the Northwest and a 35,000-kw. turbo-generator.

For those who can extend their visit beyond the time of the convention and who desire to inspect other construction work or new installations in the Northwest territory, the following are suggested as only a few of the many points of possible interest: the second Cushman unit of the city of Tacoma rapidly nearing completion; the Diablo development of the city of Seattle on the Skagit River with the dam practically completed and the power house construction under way; the recently completed Shuffleton steam plant of the Puget Sound Power & Light Company in Seattle, which is the largest in the Northwest; and the Rock Island hydro-electric project on the Columbia River 13 miles below Wenatchee, Wash., just started.



The Portland Golf Club will be the scene of the Annual Tournament and an informal banquet

Sightseeing Suggestions

The lavish wealth of country available for vacation trips before or following the convention precludes the possibility of listing all the points that might interest visitors. Suffice it to say that resorts at mountains, beaches, lakes and rivers abound, where fishing, golf, swimming and other types of diversion can be found in profusion. To name only a few, it is suggested that the loop trip around Mount Hood, including a 70-mile section of the famous Columbia River Highway, is one of the outstanding highway trips in the world. This is an easy one day's drive with luncheon at one of the several mountain resorts situated close under the glaciers of Mount Hood. Crater Lake, Ore., Rainier National Park, Wash., Seaside and Cannon beaches, Ore., a number of fishing streams and other mountain and beach resorts all lie within easy access by private motor car, bus or train from Portland.

+ + +

Golf

The fame of Portland's golfers abroad has led to the characterization of the city as the Golf Capital of America. There are seventeen private, municipal and semi-public courses in or close to the city. Practically any of these may be made available to members and guests during their visit.

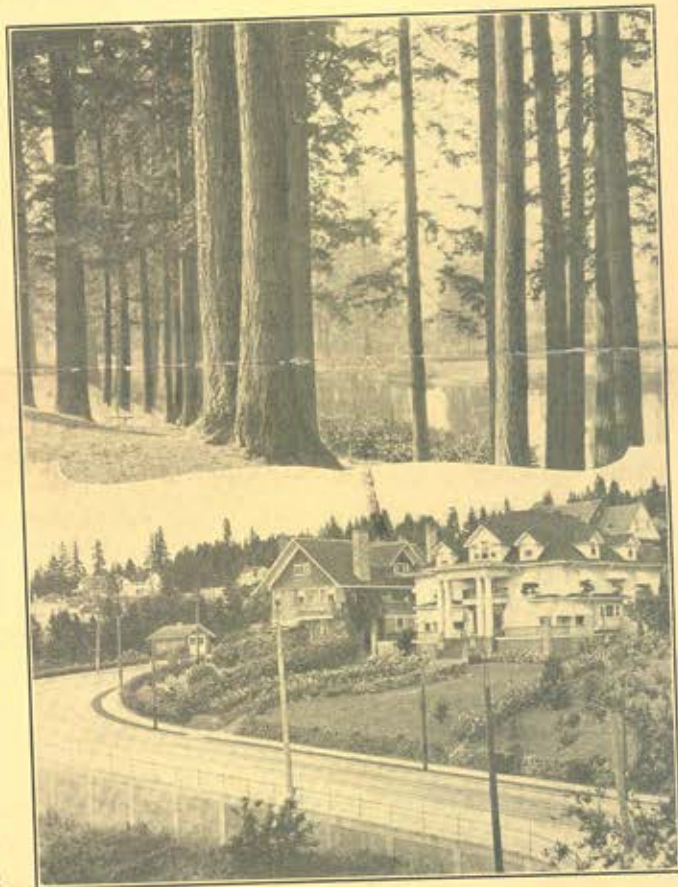
The Annual Convention Tournament will be played Thursday, September 4, on the Portland Golf Club course, one of the oldest and best in the city, and the one selected for the 1931 Western Amateur Tournament. Please refer to the enclosed card giving further information about this tournament and be sure to mail this card should you desire to enter.

Transportation

Portland is well served by railroads. To or from the south all rail travel is via the Southern Pacific, while the Great Northern, Northern Pacific, Spokane, Portland & Seattle and Union Pacific compete for business to and from the north and east. All trains arriving or leaving Portland use the Union Station, located on the west side of the Willemette River about a half mile from the business and hotel centers.

Summer round-trip rates of one and a third fares will apply to delegates from California, but not from points in the Northwest. However, delegates from the Northwest can avail themselves of the group rate which provides that any party of ten or more traveling together on the going trip, returning together or individually as desired, but using the same route in both directions, will be granted a special rate of one and one-third fares for the round trip.

Those wishing to take advantage of the established air routes should have little difficulty in arranging schedules as Portland is served by the Boeing System, the West Coast Air Transport Co. and the Varney Air Lines. Passenger planes are now in daily operation direct from the following points to Portland: Los Angeles, San Francisco, Salt Lake, Spokane, Seattle and Vancouver, B. C. Fares can be estimated at six cents per rail mile. Time en route San Francisco to Portland is approximately six hours.



Portland is a city of beautiful residence districts and parks

Entertainment

Principal entertainment features of the convention will be an informal reception and dance at the Multnomah Hotel, Tuesday evening, September 2. Thursday evening following the golf tournament an informal banquet will be staged at the Portland Golf Club, at which district paper prizes will be presented as well as golf prizes and prizes for the ladies' putting contest. Dancing and other entertainment features will be included at this event. The banquet is free to those registered, and a limited number of additional tickets at \$2.50 each may be secured at the registration desk for friends or guests not registered.

Registration

The registration desk will be maintained in the lobby of the Multnomah Hotel. It will be open on Monday afternoon, September 1, and delegates arriving on this date are urged to register then to help relieve the Tuesday morning peak.

The following registration fees will be charged:

Members and Men Guests	\$5.00
Ladies	3.00
Students	3.00

These fees cover every regularly scheduled event except the greens fee for the golf tournament, which is \$2.00 per player.



Hotel Accommodations

Convention headquarters will be at the Multnomah Hotel. Rates for this and other hotels are given below. Advance reservation should be made direct with the hotel at as early a date as possible, using the enclosed card for this purpose.

	HOTEL RATES					
	Without Bath	SINGLE ROOMS With Shower	With Bath	Without Bath	DOUBLE ROOMS With Shower	With Bath
Hotel Benson (4 blocks from Headquarters)		\$3.00	\$3.50		\$5.00	\$ 5.50
			4.00			6.00
			4.50			*6.50
Heathman Hotel and New Heathman Hotel (Half mile from Headquarters)		2.50	3.00		3.50	4.00
			4.00			5.00
						*6.00
						10.00
						12.00
Multnomah Hotel (Convention Headquarters)	2.00		2.50	3.00		3.50
	2.50		3.00	3.50		4.00
			3.50	4.00		5.00
			4.00			6.00
			5.00			7.50
			6.00			8.00
						10.00
						12.00
						4.00
The Portland Hotel (Seven blocks from Headquarters)	2.00		2.50	3.00		4.00
	2.50		to	4.00		to
*Twin Beds.			5.00			7.00



General Convention Committee

H. H. SCHOOLFIELD, Portland, Ore.
Chairman
EARL BAUGHN, Spokane, Wash.
HAROLD H. CAKE, Portland, Ore.
DEAN H. V. CARPENTER, Pullman, Wash.
R. J. COBBAN, Portland, Ore.
C. W. FICK, Portland, Ore.
C. E. FLEAGER, San Francisco, Calif.
L. F. FULLER, Palo Alto, Calif.
N. B. HINSON, Los Angeles, Calif.
A. C. KELM, Salt Lake City, Utah
PROF. A. E. KNOWLTON, New Haven, Conn.

A. H. KREUL, Portland, Ore.
A. S. MOODY, Portland, Ore.
MRS. A. S. MOODY, Portland, Ore.
A. K. MOREHOUSE, Portland, Ore.
PROF. T. H. MORGAN, Palo Alto, Calif.
C. P. OSBORNE, Portland, Ore.
E. F. PEARSON, Portland, Ore.
GEO. E. QUINAN, Seattle, Wash.
L. N. ROBINSON, Seattle, Wash.
PROF. R. D. SLOAN, Pullman, Wash.
BERKELEY SNOW, Portland, Ore.
J. TEASDALE, Vancouver, B. C.
J. E. YATES, Portland, Ore.

Sub-Committee Chairmen

Program—HAROLD H. CAKE
Golf—R. J. COBBAN
Entertainment—C. W. FICK
Finance—A. S. MOODY
Hotel—A. K. MOREHOUSE
Transportation—C. P. OSBORNE
Local Trips—E. F. PEARSON
Publicity—BERKELEY SNOW
Registration—A. H. KREUL
Reception—J. E. YATES
Ladies' Entertainment—
MRS. A. S. MOODY