

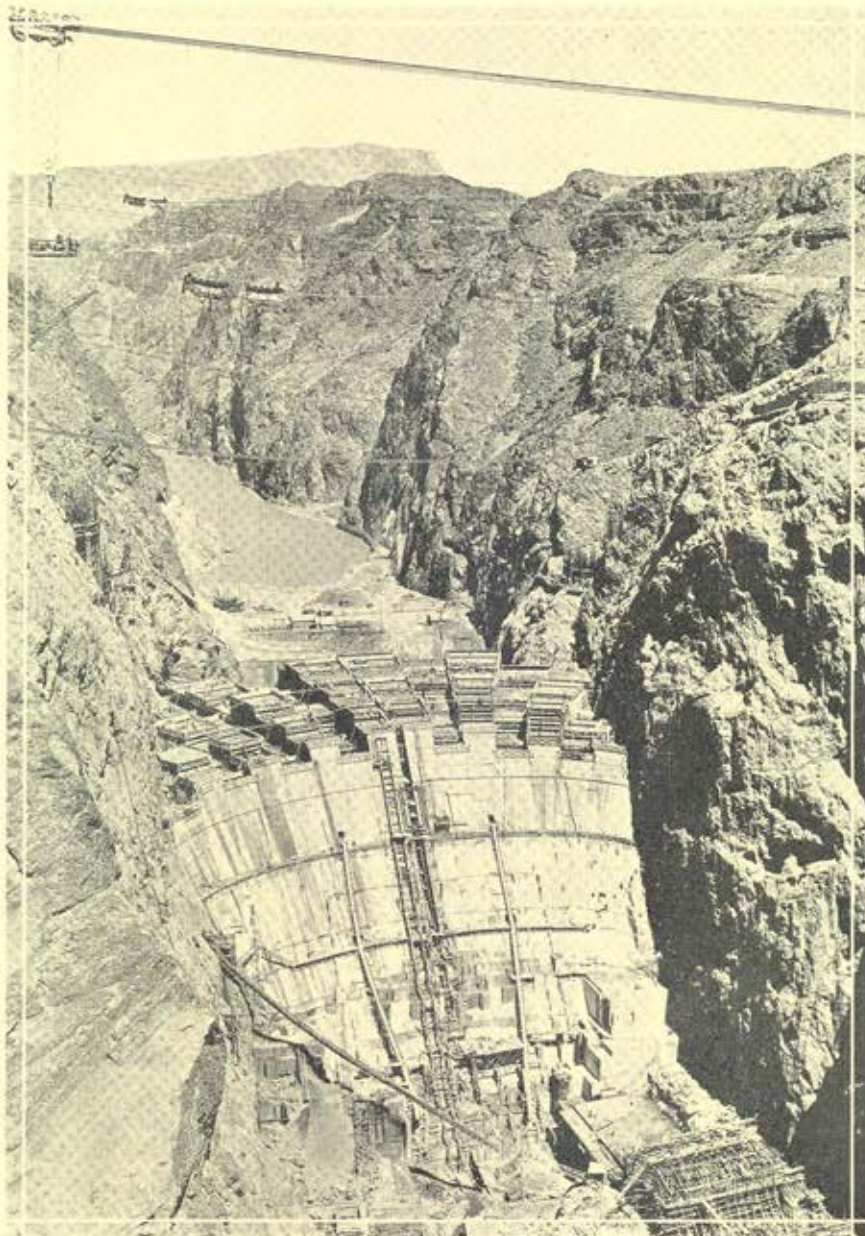
AUG 20 1934

American Institute of Electrical Engineers Pacific Coast Convention

Salt Lake City, Utah



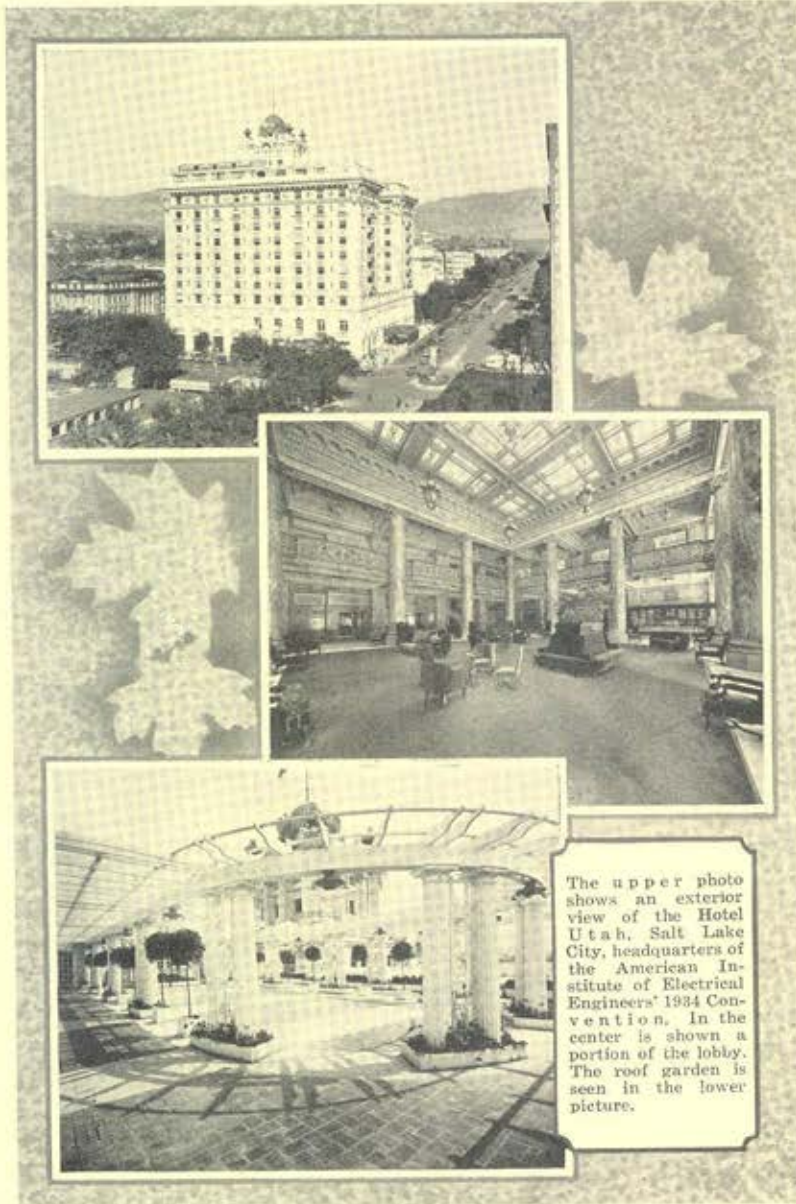
September 3-7, 1934



Boulder Dam

VACATION IN SALT LAKE — THE CENTER OF SCENIC AMERICA

Direct inquiries to
GENERAL CONVENTION COMMITTEE
1016 Continental Bank Building Salt Lake City, Utah



The upper photo shows an exterior view of the Hotel Utah, Salt Lake City, headquarters of the American Institute of Electrical Engineers' 1934 Convention. In the center is shown a portion of the lobby. The roof garden is seen in the lower picture.

Hotel Utah—Convention Headquarters

MONDAY, SEPTEMBER 3—PROGRAM

9:00 A. M.—Registration.

2:00 P. M.—Opening Session.

Address of Welcome, Paul F. Keyser, President of the Chamber of Commerce, Salt Lake City.

Response, J. Allen Johnson, President of the American Institute of Electrical Engineers.

2:30 P. M.—Technical Session — Communication.

Geo. T. Royden, Chairman.

Television, A. H. Brolly, Television Laboratories, Ltd.

August

Resonant Lines in Radio Circuits, F. E. Terman, Stanford University.

July, p. 1,046-53

Wide-band Open-wire Program System, H. S. Hamilton, American Tel. & Tel. Co.

April, p. 550-62

Line Filter for Program System, A. W. Clement, Bell Telephone Laboratories.

April, p. 562-6

8:30 P. M.—President's Reception.

Reception at Hotel Utah Followed by Dancing in the Ballroom. (Informal)

Ladies' Program.

2:00 P. M.—Auto Tour of Local Points of Scenic Interest, returning via Wasatch Boulevard, followed by Tea at the Art Barn.

Registration.

Immediately upon arrival in Salt Lake City, delegates and guests are requested to report at the registration desk at the Convention Headquarters in Hotel Utah where badges will be issued. There will be a registration fee of \$2.50 for non-members with the exception of Enrolled Students of the Institute and the immediate families of members.

Coupon books covering all or part of the entertainment program may be purchased at the time of registration.

Hotel Accommodations.

Delegates and guests should not delay making arrangements for hotel accommodations. Please remember that the number of rooms of a particular type and price is limited and that unless reserved in advance may not be available. Please communicate with the Convention Committee immediately concerning your hotel arrangements. Salt Lake City hotels are able to meet a wide range of requirements in price and class of accommodations.



Mormon Temple and Tabernacle

STUDENT PROGRAM

11:45 A. M.—Luncheon.

Counselors and Student Branch Chairmen will meet at Luncheon prior to the Student Session.

2:00 P. M.—Student Session.

Robert Ingebretsen, Chairman.

TUESDAY, SEPTEMBER 4—PROGRAM

9:00 A. M.—Technical Session — Management and Protective Devices.

C. R. Higson, Chairman.

The Theory of Incremental Rates and Their Practical Application to Load Division, Parts I and II, M. J. Steinberg and T. H. Smith, Brooklyn Edison Co.
March, p. 432-45; April, p. 571-84

Joint use of Poles with 6,900-Volt Lines, W. R. Bullard, Electric Bond and Share Co., and D. H. Keyes, American Tel. & Tel. Co.
Dec. p. 890-8

Some Recent Relay Developments, Lloyd F. Hunt and A. A. Kroneberg, Southern California Edison Co., Ltd.
April, p. 530-5

Distance Relay Action During Oscillations, E. H. Bancker and E. M. Hunter, General Electric Co.
July, p. 1,073-80

The Expulsion Oil Circuit Breaker, A. C. Schwager, Pacific Electric Mfg. Corp.
July, p. 1,108-15

Afternoon Program

12:00 Noon—Organ Recital.

Frank E. Young, Jr., in charge.

Members and guests will attend an Organ Recital at the Mormon Tabernacle.

1:00 P. M.—Convention Picture.

The Convention Group will assemble on the Temple grounds for the convention picture.

3:30 P. M.—Excursion to Saltair.

Paul P. Ashworth in charge.

Outing at Saltair participated in by the entire convention group.



The World Famous Saltair

Salt Lake City has many fine motor parks with a wide range in type of accommodations. Capitol Tourist Apartments, 1749 South State Street and Utah Motor Parks, Inc., 1000 South State Street will appreciate your patronage.



Hotel Newhouse

Salt Lake City's Newest Large Fireproof Hotel welcomes you and invites you to enjoy its hospitality.

Afternoon Program.

2:00 P. M. — Inspection trip to Utah Copper Company Mine and Mills.

R. J. Corfield in charge.

Members and guests will tour Bingham Canyon returning via Magna and Garfield.

Alternate inspection trips to local points of interest including mining and industrial developments will be arranged for those who desire it.



Bingham Canyon and Mine of the Utah Copper Company

WEDNESDAY, SEPTEMBER 5—PROGRAM

9:00 A. M.—Technical Session—Lightning.

Vice-President F. O. McMillan, Chairman.

Lightning Investigation on Transmission Lines—IV, W. W. Lewis and C. M. Foust, General Electric Co.

August

Lightning Investigation on 220-KV Pennsylvania Power and Light Company System 1931-1933, Edgar Bell, Pennsylvania Power & Light Co.

August

Counterpoise Tests at Trafford, C. L. Fortescue, and F. D. Fielder, Westinghouse Electric & Mfg. Co.

July, p. 1,116-23

Lightning Performance of 132-KV Lines, Philip Sporn and I. M. Gross, American Gas & Electric Co.

August

Field Tests on the Counterpoise, L. V. Bewley, General Electric Co.

August

2:00 P. M.—Student Session.

Don Pugsley, Chairman.

HOTEL RATES

	Room with Bath (One Person)	Room with Bath (Two Persons)
Hotel Newhouse	\$2.00 to \$4.00	\$2.50 to \$6.00
Hotel Temple Square.....	2.00	2.50
Hotel Utah	2.50 and up	3.00 and up



The Salt Lake Country Club

GOLF

The John B. Fisken Cup competition, open only to members of the Pacific Coast Sections, will take place at 2:00 P. M. Thursday, September 6th at the Salt Lake Country Club. Competition for other prizes will be open to all registered members and guests attending the convention. Do not miss this important event at the most beautiful of golf courses in the intermountain country.

With the exception of Monday, all afternoons during the convention will be available for members and guests to spend in recreation if they so desire. Salt Lake City is provided with three private and two municipal golf courses famed for their variety of settings and beauty of surroundings.

THURSDAY, SEPTEMBER 6—PROGRAM

9:00 A. M.—Technical Session—Transmission

D. M. Simmons, Chairman

Field Tests on Conductor Vibration, E. M. Wright and Joseph Mini, Jr., Pacific Gas & Electric Co.
July, p. 1, 123-7

Corona Losses from Conductors of 1.4-Inch Diameter, Joseph S. Carroll, Stanford University, Bradley Cozzens and T. M. Blakeslee, Dept. of Water and Power, City of Los Angeles, California.
Dec., p. 854-60

Power Limits of 220-KV Transmission Lines, Alex. A. Kroneberg, Southern Calif. Edison Co., Ltd., Los Angeles, and Mabel Macferran, Metropolitan Water District of Southern California, Los Angeles.
Nov., p. 758-66

Power Limits of Synchronous Machines, Edith Clarke and R. G. Lorraine, General Electric Co.
Nov., p. 780-7

The Insulator String, R. W. Sorensen, California Institute of Technology.

August

Properties of Contaminated Glass and Porcelain Surfaces, W. A. Hillebrand, University of California.

August

Ladies' Program

1:00 P. M.—Luncheon at the Salt Lake Country Club.

2:00 P. M.—Approaching and Putting Contest. Prizes will be awarded.

A bridge contest will be arranged following the luncheon and prizes will be awarded.

Convention Banquet

7:30 P. M.—Banquet at the Salt Lake Country Club, followed by dancing. (Informal)

Awarding of golf prizes and the prizes for other afternoon events will take place immediately following the banquet.



A Glimpse of the North Amphitheater in Bryce Canyon

VACATION SUGGESTIONS

Salt Lake City, "The Center of Scenic America," is one of the nation's most individual cities. It offers something entirely different and unique in vacations—new scenes in a new atmosphere. This city, founded by the Mormons in 1847, is the gateway to many natural wonderlands and scenic attractions among which may be mentioned:

Zion National Park with its gigantic cliffs of red and white sandstone, its temples and monumental thrones, its spectacular Zion-Mt. Carmel highway piercing the solid rock wall.

Cedar Breaks with its breath-taking vistas of strange and brilliantly colored formations.

Bryce National Park, the "canyon of fire," with its incredibly fanciful architectural forms and flaming colors.

The north rim of the Grand Canyon of the Colorado, where earth's greatest chasm stretches profoundly before and below you.

Yellowstone and Grand Teton National Parks, world-famous for wild beauty, amazing natural phenomena, superlative fishing and hunting.

Great Salt Lake, world's largest inland body of salt water.

Of new interest is the Boulder Dam, near Las Vegas, Nevada, now at its most interesting construction stage.

Convention delegates and guests are urged to avail themselves of the opportunity to visit these places, a number of which can be reached in a day's drive by automobile or a night's ride by rail from Salt Lake City.

TRANSPORTATION

In purchasing railroad tickets delegates from Missouri River points or east should have the trip to Salt Lake include such side trips as may be contemplated. These side trips can be arranged very inexpensively. Delegates from the Pacific Coast and from points between the Missouri River and Salt Lake City are advised to decide regarding trips to Yellowstone or Southern Utah points and to take advantage of excursion rates and side trip provisions at the time of purchasing the ticket to Salt Lake City. Do not neglect to consult the local ticket agent regarding all railroad fares.

For those who may arrive without having included in the railroad ticket side trips to Boulder Dam, the Southern Utah Parks or Yellowstone, the following information may be of value:

Railroad Fare—Salt Lake City to Las Vegas and return	\$17.85
Bus Fare—Las Vegas to Boulder Dam and return	1.75
Railroad Fare—Salt Lake City to Cedar City and return	11.58
Railroad Fare—Salt Lake City to West Yellowstone and return	14.00
Lower Standard Berth—Salt Lake City to Cedar City (one way)	2.55
Lower Standard Berth—Salt Lake City to West Yellowstone (one way)	2.50
Lower Standard Berth—Salt Lake City to Las Vegas (one way)	3.50

FRIDAY, SEPTEMBER 7—PROGRAM

9:00 A. M.—Technical Session — Selected Subjects.

A. W. Copley, Chairman.

Simplified Measurements of Sound Absorption, A. L. Albert and T. B. Wagner, Oregon State College. August

A Glow Discharge Anemometer, F. C. Lindvall, California Institute of Technology. July, p. 1,068-73

Electrical Figures on Plates in Air, J. Gibson Pleasants, California Institute of Technology. Feb., p. 300-7

Reignition of an Arc at Low Pressures, S. S. Mackeown, J. D. Cobine, and F. W. Bowden, California Institute of Technology. July, p. 1081-5

Insulator Arcover in Air, F. W. Maxstadt, California Institute of Technology. July, p. 1062-8

STUDENT PROGRAM

12:00 Noon—Luncheon for Counselors and Chairmen.

Joint Conference of Counselors and Student Branch Chairmen. Districts 8, 9 and 10.