



SOUTHERN DISTRICT MEETING

AND STUDENT BRANCH CONVENTION

ASHEVILLE, N. C.

MAY 14-16, 1946



The Grove Park Inn—Meeting Headquarters

MEETING FEATURES

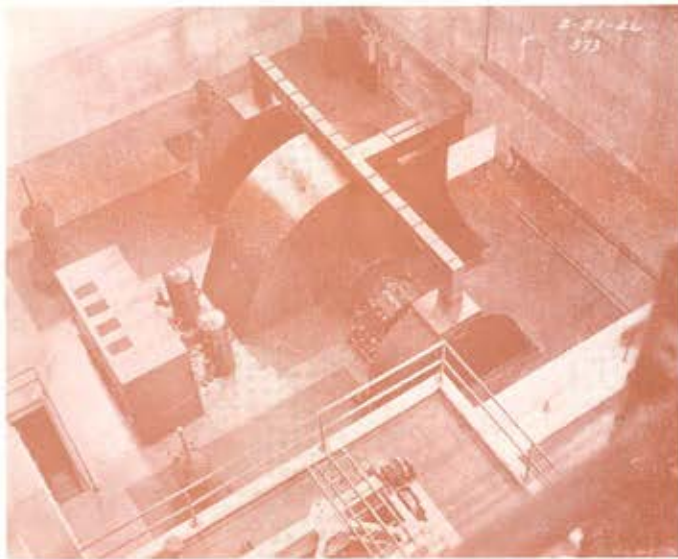
Asheville and the Grove Park Inn will be host to a three day meeting of the Southern District, May 14-16, which is a most delightful time of the year in mountain country. No meeting could be more ideally suited for a spring vacation; accessible by rail, car or plane; and a proper combination of relaxation and serious thought in easy proportions.

As this is the first meeting of the District since 1941 at which student attendance is generally possible, the program has been arranged to permit the widest possible latitude to student inclinations. Two afternoons have been reserved exclusively for inspection trips of sufficient diversity to appeal to those with industry leanings and to those with utility leanings. Three technical sessions of current interest are included in the program. Because textile production is the major industry in the District, one technical session is devoted largely to this subject. The other two sessions cover such diverse technical interest, they should prove highly interesting and instructive.

On Tuesday evening, President Wickenden will address a general session. The following evening, Commodore Hellweg will give an address on "Time" to which the U. S. Naval Observatory, where he had been in charge, is largely devoted.

Special attention is directed to the parts of the Program concerning Planning and Coordination of Institute Activities which will afford an opportunity for free expression of opinions. The Institute has problems which must be resolved now. Interest in these discussions will be heightened by the presence of members of the Board of Directors.

Entertainment and Sports—Golf can be played on any one of four 18-hole courses and one 9-hole course. The Asheville Country Club course adjoins the Inn and presents a beautiful setting. If there is sufficient interest, the Committee will arrange a golf tournament with prizes. Tennis, horseback riding, swimming, shuffleboard and theatres are also available.



Glenville Plant of the Nantahala Power & Light Company, which will be visited on Wednesday and Thursday afternoons

Inspection Trips

Ecusta Paper Corporation, Pisgah Forest, N. C.

—This plant is approximately 35 miles from the Grove Park Inn and is one of the largest producers of cigarette paper in the world. Limited quantities of the highest grade paper for stationery are also produced. Extensive additions which will multiply production are under way. The inspection will require about two hours in the plant.

American Enka Corporation, Enka, N. C.

—This plant is located approximately 12 miles from the Grove Park Inn and is the only producer of Rayon in North Carolina. The trip begins with a lecture describing the processes, followed by an inspection of the production units. This plant has its own power and water processing facilities. Approximately two hours will be consumed in the plant.

Glenville Hydro Plant, Nantahala Power & Light Co.

—This plant is approximately 70 miles from the Grove Park Inn and is the highest head plant (1150 feet) in the east. Two overhung impulse wheels drive a single 30,000 kva horizontal generator between them. The dam is several miles by highway from the plant and the lake connects with the plant through 2½ miles of tunnel through rock and 2/3 miles of steel pipe, 8 feet in diameter.

Cliffside Steam Plant, Duke Power Co.

—This plant is approximately 70 miles from the Grove Park Inn. It has installed, two 40,000 kw, 3600 rpm units operating at 900 lbs and 900 degrees. Work has been started on a 65,000 kw addition to operate at 1250 lbs and 950 degrees.

Monday Evening

8:00 p.m.—District Four Executive Committee Meeting

Vice-President H. B. Wolf, Presiding

8:30 p.m.—Informal Discussion of Institute Affairs

Vice-President J. F. Fairman, Presiding

Southern District Meeting

Tuesday, May 14

8:30 a.m.—Registration

10:30 a.m.—Opening Session

J. F. Rader, Presiding

Address of Welcome: the Mayor of Asheville

Remarks: Vice-President H. B. Wolf

Remarks: President-nominee J. E. Housley

Talk on Institute Planning: Vice-President J. F. Fairman, Chairman, Committee on Planning and Coordination

2:30 p.m.—Meeting of Board of Directors

2:30 p.m.—Symposium on Electric Power in the Textile Industry

J. H. Berry, Presiding

*DP. Viewpoint of the Manufacturer. W. L. Bross, Mathews Mill.

*DP. Viewpoint of the Design Engineer. George Wrigley, J. E. Serrine & Co.

*DP. Viewpoint of Electric Utility. G. G. Mattison and W. K. Harding, Duke Power Co.

*DP. Discussion on Electronic Heating in Textile Manufacture. H. T. Smith, The Girdler Corp.

*DP. Price Is a Function of Wages. F. U. Ross, Virginia Elec. & Pr. Co.

*DP. The Responsibility of AIEE to the High School. W. E. Lindemann, Tennessee Valley Authority.

8:30 p.m.—General Session

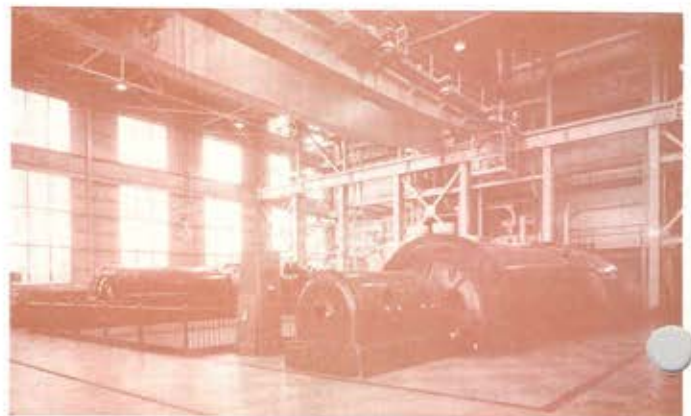
Vice-President H. B. Wolf, Presiding

Address by President W. E. Wickenden.

Wednesday, May 15

8:30 a.m.—Business Meeting of the North Carolina Section

Prof. Otto Meier, Jr., Presiding



The Cliffside Plant of the Duke Power Company, which also may be visited on Wednesday and Thursday afternoons

ADVANCE COPIES OF PAPERS

Preprints of technical papers may be obtained by mail by remitting price indicated to the A.I.E.E. Order Department, 33 West 39th Street, New York 18, N. Y.; if purchased at A.I.E.E. headquarters or at the meeting 5c less per copy. For convenience an order form is enclosed. Only numbered papers will be available in advance-copy form. Mail orders (particularly from out-of-town members) are advisable, inasmuch as an adequate supply of each paper at the meeting cannot be assured.

Please order by number only and enclose remittance.

9:00 a.m.—Student Papers Session
Prof. Otto Meier, Jr., Presiding

9:00 a.m.—Technical Session
W. Stone Leake, Presiding

46-96. Maintenance of Rectifiers in Electrochemical Installations. J. E. Housley and G. N. Hughes, Aluminum Company of America. 15 cents by mail.

*DP. Industrial Power Distribution. R. H. Kaufmann, General Elec. Co.

46-97. Lightning Protection for Industrial Plants. E. W. Beck and J. Z. Linsenmeyer, Westinghouse Elec. Corp. 15 cents by mail.

46-102. Factors Affecting Range of Radar Sets. L. R. Quarles and W. M. Breazeale, University of Virginia. 15 cents by mail.

2:00 p.m.—Inspection Trips
Ecusta Paper Corporation
Glennville Hydro Plant
Cliffside Steam Plant

8:30 p.m.—General Session

W. J. Miller, Presiding

Award of Student Prizes: E. W. O'Brien, Chairman, Committee on Student Branches.

Address: Commodore J. F. Hellweg, USN (Retired), U. S. Naval Observatory.

Thursday, May 16

8:30 a.m.—Conference on Student Activities
Prof. Otto Meier, Jr., Presiding

9:00 a.m.—Technical Session
Prof. J. G. Tarboux, Presiding

*DP. 115-KV Cable Chosen for Atlanta. R. O. Loomis and P. B. Boyd, Georgia Power Co.

46-98. Selective Ground Relaying of an Ungrounded System. E. P. Miller, South Carolina Elec. & Gas Co. 15 cents by mail.

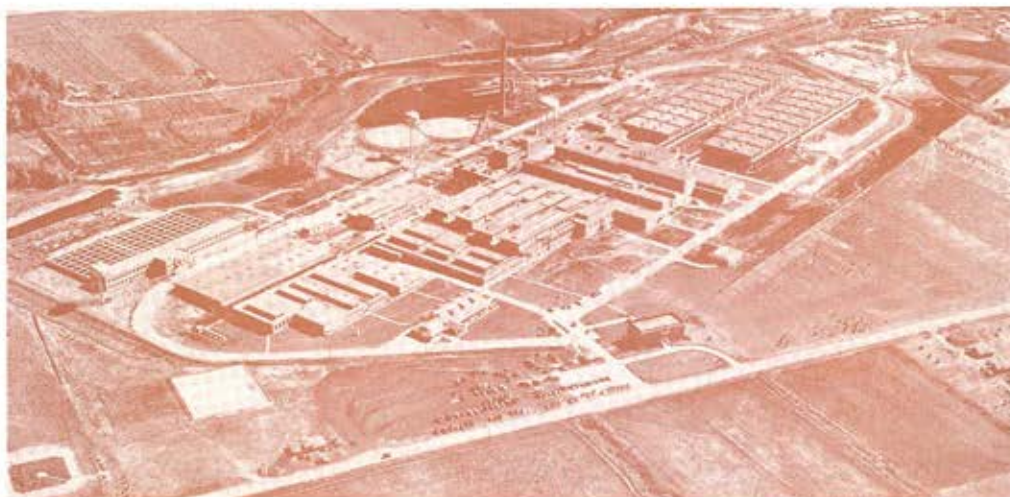
*DP. Centralized Control of a Power System. Perry Peterson, Control Corp.

46-101. Co-ordinated Communication System Speeds TVA Operations. T. DeWitt Talmage, Tennessee Valley Authority. 30 cents by mail.
First Prize Student Paper.

2:00 p.m.—Inspection Trips
American Enka Corporation
Glennville Hydro Plant
Cliffside Steam Plant

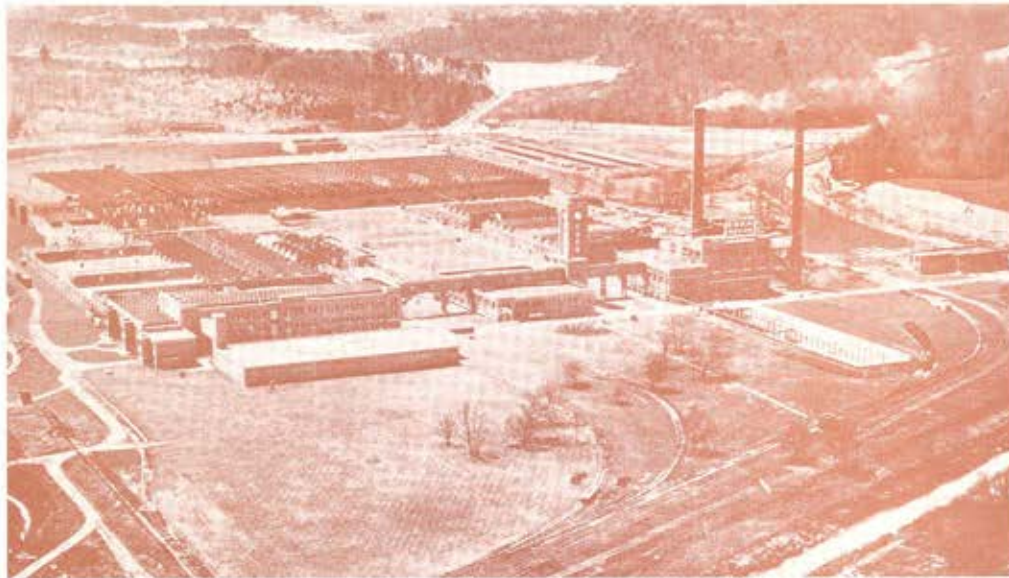
*DP: District paper; no advance copies are available but authors may distribute copies at meeting; not intended for publication in "Transactions".

‡ACO: Advance copies only available; not intended for publication in "Transactions".



Fairchild Aerial Surveys, Inc.

Ecusta Paper Corporation in Pisgah Forest, N. C., which will be inspected on a trip through the plant from 3:00 to 5:00 p.m. on Wednesday afternoon



American Enka Corporation Plant, which will be visited from 3:00 to 5:00 p.m. on Thursday afternoon

Ladies Program—On Tuesday afternoon, May 14, a conducted visit to the Biltmore House and Estate has been arranged. The mansion, completed by George W. Vanderbilt in 1895, is filled with works of art from all parts of the world. Rare prints, paintings, sculptures and tapestries are everywhere and historical antiques comprise most of the furnishings. The estate includes about 12,000 acres of land—some in forest, some in gardens and farms, and a large acreage in formal landscaping.

On Wednesday morning, May 15, there will be an interesting trip to watch Stuart Nye make custom jewelry and silverware, followed by a trip to see pottery being formed. At noon, a bridge luncheon is scheduled for the Asheville Country Club.

Although the ladies are cordially invited to participate in all of the regularly scheduled inspection trips listed elsewhere, they have a special invitation to attend the inspection of American Enka Corporation on Thursday afternoon, May 16th, and see rayon made.

One to four hour scenic trips can be arranged at any time during the meeting. Shopping trips in Asheville will offer attractive diversion. The Biltmore industries on the Inn grounds will prove interesting and instructive. The famous Biltmore Homespun is woven here on hand looms and beautiful wood carving is done.

Hotel Reservations—The hotel reservations cards sent with this program are addressed to the Grove Park Inn, which is meeting headquarters. The Inn has accommodations for 250. Should the requests for accommodations exceed this capacity, the Inn management has consented to continue making reservations, first at The Manor, and then at the Asheville Country Club, both of which are in close proximity to the Inn. All meals may be taken at the Inn by special arrangement with the Manager.

Reservations at all other hotels should be made by communicating directly with the hotel preferred. It is suggested that confirmation of all reservations be requested.

Rates for room with bath are:

Hotel	Plan	Single	Double	Capacity
Grove Park Inn	A	\$11.00	\$18.00	250
The Manor	A	9.00	16.00	100
Asheville Country Club	A	9.00	16.00	50
Battery Park	E	4.00	7.00	400
George Vanderbilt	E	3.50	6.00	350

Advance Registration—Please register in advance by filling in and mailing promptly the enclosed advance registration card. This will assist the registration committee and save time on arrival at the meeting. A registration fee of \$2.00 will be charged all nonmembers except Enrolled Students and immediate families of members.

Committees

District Officers: H. B. Wolf, Vice-President, Southern District; C. B. Galphin, District Secretary

General Committee: J. F. Rader, H. W. Oetinger, Co-Chairmen; All Section Chairmen, Ex-officio

Hotels & Registration: H. H. Gnuse, Jr., Chairman; W. F. Sanders; C. O. Warren

Attendance & Publicity: J. H. Lampe, Chairman; F. C. Alexander; W. W. Ballew

Technical Papers: F. W. Chapman, W. J. Seeley, Co-Chairmen

Transportation & Inspection Trips: M. F. Leftwich, Chairman; H. E. Crossley; H. E. Wilson

Finance: H. B. Robinson, Chairman; W. H. Kendrick

Ladies Entertainment: Mrs. Howard Ströck, Chairman; Mrs. G. O. Bason, Mrs. Dean Davis, Mrs. H. M. Doerschuck, Mrs. C. B. Galphin, Mrs. M. R. Kimbrell, Mrs. O. J. Miller, Mrs. J. F. Rader, Mrs. H. B. Robinson, Mrs. Chas. Waddell, Mrs. H. B. Wolf.

Sports & Entertainment: G. O. Bason, Chairman; Dean Davis

Student Activities: Otto Meier, Jr., Chairman; E. W. O'Brien, Ex-officio

Issued by

AMERICAN INSTITUTE OF ELECTRICAL ENGINEERS

33 West 39th Street, New York 18, N. Y.